

# BELLOSTA

LISTINO CLASSICO | 80.2013

CURA, ATTENZIONE, TECNICHE D'AVANGUARDIA, GUSTO, STILE ED ESPERIENZA, SONO GLI INGREDIENTI DELLE COLLEZIONI D'AUTORE BELLOSTA RUBINETTERIE

GRAZIE PER LA FIDUCIA

PRODOTTO INTERAMENTE IN ITALIA



CARE, ATTENTION, AVANTGARDE TECHNIQUE, TASTE, STYLE AND EXPERIENCE ARE THE INGREDIENTS OF THE BELLOSTA RUBINETTERIE COLLECTIONS

THANKS FOR THE TRUST

COMPLETELY MADE IN ITALY





<b>PASCAL</b>	525
<b>NOËL</b>	525
<b>EDWARD</b>	526
<b>EDWARD LEVER</b>	527
<b>ROMINA</b>	528
<b>CHARLOTTE</b>	529
<b>JOCONDE</b>	530
<b>CYGNUS</b>	531
<b>KROCUS</b>	531

**B-COLORS!**

<b>01</b>   cromo <i>chrome</i>	<b>02</b>   cromo / oro <i>chrome / gold</i>	<b>03</b>   oro / argento <i>gold / silver</i>	<b>04</b>   dorato <i>gold</i>
<b>05</b>   bronzo satinato <i>satin bronze</i>	<b>06</b>   rame vecchio <i>old copper</i>	<b>07</b>   vecchio argento <i>old silver</i>	<b>08</b>   canna fucile <i>gun barrel</i>
<b>09</b>   canna fucile / oro <i>gun barrel / gold</i>	<b>10</b>   verderame <i>verdigris</i>	<b>11</b>   nero antracite <i>anthracite black</i>	<b>12</b>   ottone lucido <i>polished brass</i>
<b>13</b>   ottone naturale <i>natural brass</i>	<b>14</b>   bianco <i>white</i>	<b>15</b>   bianco / oro <i>white / gold</i>	<b>16</b>   bianco / cromo <i>white / chrome</i>
<b>17</b>   nero / oro <i>black / gold</i>	<b>18</b>   nero / cromo <i>black / chrome</i>	<b>19</b>   nero <i>black</i>	<b>20</b>   avorio / cromo <i>ivory / chrome</i>
<b>21</b>   azzurro / cromo <i>light blue / chrome</i>	<b>22</b>   verdino / cromo <i>light green / chrome</i>	<b>23</b>   marrone / cromo <i>brown / chrome</i>	<b>24</b>   arancio / cromo <i>orange / chrome</i>
<b>25</b>   rosso / cromo <i>red / chrome</i>	<b>26</b>   cromo sat / cromo <i>satin chrome / chrome</i>	<b>27</b>   cromo sat / oro <i>satin chrome / gold</i>	<b>28</b>   nickel satinato <i>satin nickel</i>
<b>29</b>   nickel sat / cromo <i>satin nickel / chrome</i>	<b>30</b>   nickel c/prot <i>prot nickel</i>	<b>31</b>   nickel c/prot / oro <i>prot nickel / gold</i>	<b>32</b>   nickel c/prot / cromo <i>prot nickel / chrome</i>
<b>33</b>   cromo satinato <i>satin chrome</i>	<b>34</b>   cromo spazzolato <i>brushing chrome</i>	<b>35</b>   nickel spazzolato <i>brushing nickel</i>	<b>36</b>   nickel spazzolato / oro <i>brushing nickel / gold</i>
<b>53</b>   canna fucile / cromo <i>gun barrel / chrome</i>	<b>54</b>   cromo / leva cromo sat <i>chrome / sat chrome lever</i>	<b>55</b>   nickel sat / oro <i>satin nickel / gold</i>	<b>56</b>   avorio <i>ivory</i>
<b>57</b>   azzurro <i>light blue</i>	<b>58</b>   verdino <i>light green</i>	<b>59</b>   marrone <i>brown</i>	<b>60</b>   arancio <i>orange</i>
<b>61</b>   rosso <i>red</i>	<b>63</b>   nickel <i>nickel</i>	<b>66</b>   bianco opaco <i>mat white</i>	<b>67</b>   nero opaco <i>mat black</i>
<b>68</b>   rame opaco <i>mat copper</i>	<b>69</b>   argento opaco <i>mat silver</i>	<b>71</b>   oro opaco <i>mat gold</i>	<b>72</b>   bronzo opaco <i>mat bronze</i>
<b>75</b>   dorato spazzolato <i>brushing gold</i>			



**progetto**  
"sumisura"

Per ogni esigenza progettuale, è possibile richiedere una finitura non presente di serie nella collezione scelta, grazie al team PROGETTO SU MISURA, che realizzerà ad hoc il prodotto.

I tecnici Bellosta Rubinetterie sono, inoltre, a disposizione di architetti e designer, per offrire un servizio esclusivo, personalizzando gli elementi in funzione di specifiche richieste estetiche o problematiche legate a vincoli progettuali, e per verificare la fattibilità attraverso opportuni studi CAD e sviluppare il disegno tecnico del prodotto speciale richiesto.

Per informazioni e richieste PROGETTI SU MISURA:  
[ufficiotecnico@bellostarubinetterie.com](mailto:ufficiotecnico@bellostarubinetterie.com)

*For every requirements is possible to ask a finished that is not presented in the catalogue thanks to the team of PROGETTO SU MISURA, that will make the project.*

*The Bellosta Rubinetterie technician are available for designers and architects, to offer this service to all designers, making components to measure to meet specific, functional or design-dictated requirements, and to verify the possibility of making of the project by CAD used and technical scheme.*

For informations and PROJECTS "SU MISURA" requests:  
[ufficiotecnico@bellostarubinetterie.com](mailto:ufficiotecnico@bellostarubinetterie.com)

**ATTENZIONE:**

Dal presente listino le collezioni ROMINA, EDWARD, CHARLOTTE e JOCONDE prevedono esclusivamente la dotazione di vitone ceramico.

**ATTENTION:**

*Please note that ROMINA, EDWARD, CHARLOTTE and JOCONDE collections are supplied with ceramic valve only.*

**CONSIGLIO TECNICO:**

tutti gli articoli della collezione CHARLOTTE vengono collaudati nel loro funzionamento al momento dell'assemblaggio. Per garantire la durata dei vitoni nel tempo, si consiglia di spurgare bene l'impianto idraulico prima del montaggio (per rimuovere eventuali detriti) e di installare:

per i monofori Rubinetti sottolavabo con filtro art. 020 (vedi pag. 545)  
oppure art. 020/1 (vedi pag. 546)

N.B.:

Qualora il piano lavabo avesse uno spessore superiore a 2,5 cm specificare misura al momento dell'ordine.

**TECHNICAL ADVICE:**

*all mixers of the CHARLOTTE collection are perfectly tested.*

*To guarantee the perfect functionality of the gland for a long time, we advise to clean the sanitary plant before installing the mixer.*

*Moreover we advise to install:*

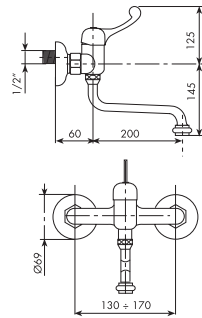
*for single hole mixers*

*Angle valve with filter art. 020 (see page 545)  
or art. 020/1 (see page 546)*

*Attention:*

*If the lavatory top is more than cm 2,5 thick, please point it out when placing the order.*

Art. 1009 Pascal

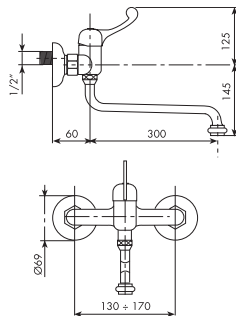


Miscelatore per lavello a muro con canna da 200 mm

Exposed single lever mixer for sink with mm 200 spout

01-1009	<b>cromato</b>	12-1009	<b>ottone lucido</b>
02-1009	<b>cromo/oro</b>	71-1009	<b>oro opaco</b>
04-1009	<b>dorato</b>	72-1009	<b>bronzo opaco</b>
05-1009	<b>bronzo satinato</b>		

Art. 1009/A Pascal

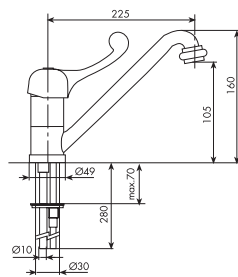


Miscelatore per lavello a muro con canna da 300 mm

Exposed single lever mixer for sink with mm 300 spout

01-1009/A	<b>cromato</b>	12-1009/A	<b>ottone lucido</b>
02-1009/A	<b>cromo/oro</b>	71-1009/A	<b>oro opaco</b>
04-1009/A	<b>dorato</b>	72-1009/A	<b>bronzo opaco</b>
05-1009/A	<b>bronzo satinato</b>		

Art. 1010 Pascal

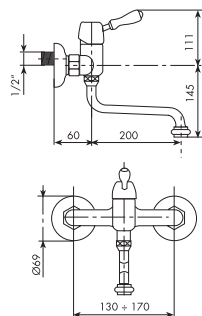


Miscelatore per lavello

Single lever mixer for sink

01-1010	<b>cromato</b>	12-1010	<b>ottone lucido</b>
02-1010	<b>cromo/oro</b>	71-1010	<b>oro opaco</b>
04-1010	<b>dorato</b>	72-1010	<b>bronzo opaco</b>
05-1010	<b>bronzo satinato</b>		

Art. 1509 Noël

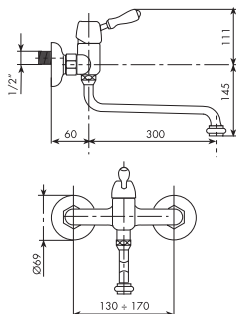


Miscelatore per lavello a muro con canna da 200 mm

Exposed single lever mixer for sink with mm 200 spout

leva porcellana bianca		leva legno (noce)
01-1509	<b>cromato</b>	01-1509/LL
04-1509	<b>dorato</b>	04-1509/LL
05-1509	<b>bronzo satinato</b>	05-1509/LL
06-1509	<b>rame vecchio</b>	06-1509/LL
72-1509	<b>bronzo opaco</b>	72-1509/LL

Art. 1509/A Noël

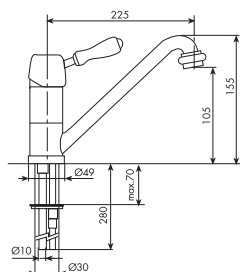


Miscelatore per lavello a muro con canna da 300 mm

Exposed single lever mixer for sink with mm 300 spout

leva porcellana bianca		leva legno (noce)
01-1509/A	<b>cromato</b>	01-1509/A/LL
04-1509/A	<b>dorato</b>	04-1509/A/LL
05-1509/A	<b>bronzo satinato</b>	05-1509/A/LL
06-1509/A	<b>rame vecchio</b>	06-1509/A/LL
72-1509/A	<b>bronzo opaco</b>	72-1509/A/LL

Art. 1510 Noël

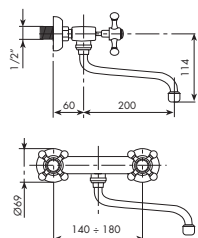


Miscelatore per lavello

Single lever mixer for sink

leva porcellana bianca		leva legno (noce)
01-1510	<b>cromato</b>	01-1510/LL
04-1510	<b>dorato</b>	04-1510/LL
05-1510	<b>bronzo satinato</b>	05-1510/LL
06-1510	<b>rame vecchio</b>	06-1510/LL
72-1510	<b>bronzo opaco</b>	72-1510/LL

Art. 0809/C Edward

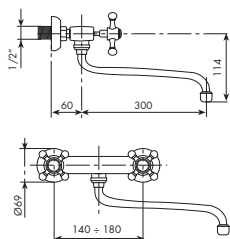


Gruppo per lavello a muro con bocca da 200 mm

Exposed group for sink with mm 200 spout

01-0809/C	<b>cromato</b>	07-0809/C	<b>vecchio argento</b>
02-0809/C	<b>cromo/oro</b>	10-0809/C	<b>verderame</b>
04-0809/C	<b>dorato</b>	12-0809/C	<b>ottone lucido</b>
05-0809/C	<b>bronzo satinato</b>	13-0809/C	<b>ottone naturale</b>
06-0809/C	<b>rame vecchio</b>		

Art. 0809/A/C Edward

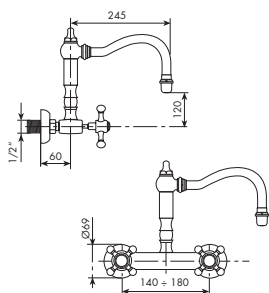


Gruppo per lavello a muro con bocca da 300 mm

Exposed group for sink with mm 300 spout

01-0809/A/C	<b>cromato</b>	07-0809/A/C	<b>vecchio argento</b>
02-0809/A/C	<b>cromo/oro</b>	10-0809/A/C	<b>verderame</b>
04-0809/A/C	<b>dorato</b>	12-0809/A/C	<b>ottone lucido</b>
05-0809/A/C	<b>bronzo satinato</b>	13-0809/A/C	<b>ottone naturale</b>
06-0809/A/C	<b>rame vecchio</b>		

Art. 0809/B/C Edward

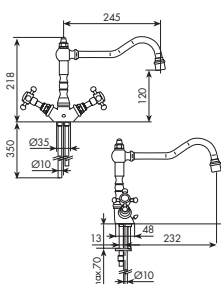


Gruppo per lavello a muro con bocca alta

Exposed group for sink with high spout

01-0809/B/C	<b>cromato</b>	07-0809/B/C	<b>vecchio argento</b>
02-0809/B/C	<b>cromo/oro</b>	10-0809/B/C	<b>verderame</b>
04-0809/B/C	<b>dorato</b>	12-0809/B/C	<b>ottone lucido</b>
05-0809/B/C	<b>bronzo satinato</b>	13-0809/B/C	<b>ottone naturale</b>
06-0809/B/C	<b>rame vecchio</b>		

Art. 0810/C Edward

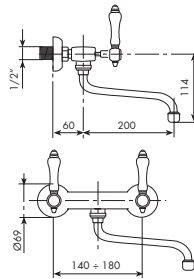
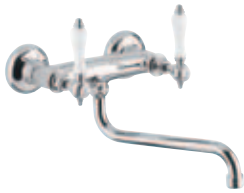


Monoforo per lavello

Single hole for sink

01-0810/C	<b>cromato</b>	07-0810/C	<b>vecchio argento</b>
02-0810/C	<b>cromo/oro</b>	10-0810/C	<b>verderame</b>
04-0810/C	<b>dorato</b>	12-0810/C	<b>ottone lucido</b>
05-0810/C	<b>bronzo satinato</b>	13-0810/C	<b>ottone naturale</b>
06-0810/C	<b>rame vecchio</b>		

**Art. 0809/L Edward Lever**

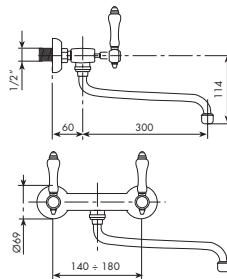


**Gruppo per lavello a muro con bocca da 200 mm**

*Exposed group for sink with mm 200 spout*

leva porcellana bianca		leva legno (noce)
01-0809/L	<b>cromato</b>	01-0809/LL
02-0809/L	<b>cromo / oro</b>	02-0809/LL
04-0809/L	<b>dorato</b>	04-0809/LL
05-0809/L	<b>bronzo satinato</b>	05-0809/LL
06-0809/L	<b>rame vecchio</b>	06-0809/LL
12-0809/L	<b>ottone lucido</b>	12-0809/LL

**Art. 0809/A/L Edward Lever**

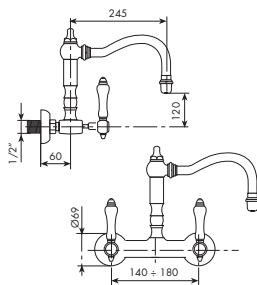


**Gruppo per lavello a muro con bocca da 300 mm**

*Exposed group for sink with mm 300 spout*

leva porcellana bianca		leva legno (noce)
01-0809/A/L	<b>cromato</b>	01-0809/A/LL
02-0809/A/L	<b>cromo / oro</b>	02-0809/A/LL
04-0809/A/L	<b>dorato</b>	04-0809/A/LL
05-0809/A/L	<b>bronzo satinato</b>	05-0809/A/LL
06-0809/A/L	<b>rame vecchio</b>	06-0809/A/LL
12-0809/A/L	<b>ottone lucido</b>	12-0809/A/LL

**Art. 0809/B/L Edward Lever**

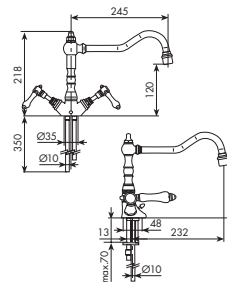


**Gruppo per lavello a muro con bocca alta**

*Exposed group for sink with high spout*

leva porcellana bianca		leva legno (noce)
01-0809/B/L	<b>cromato</b>	01-0809/B/LL
02-0809/B/L	<b>cromo / oro</b>	02-0809/B/LL
04-0809/B/L	<b>dorato</b>	04-0809/B/LL
05-0809/B/L	<b>bronzo satinato</b>	05-0809/B/LL
06-0809/B/L	<b>rame vecchio</b>	06-0809/B/LL
12-0809/B/L	<b>ottone lucido</b>	12-0809/B/LL

**Art. 0810/L Edward Lever**

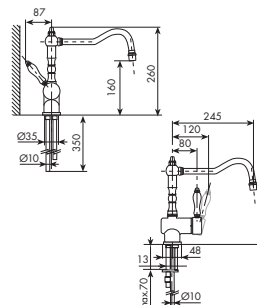


**Monoforo per lavello**

*Single hole for sink*

leva porcellana bianca		leva legno (noce)
01-0810/L	<b>cromato</b>	01-0810/LL
02-0810/L	<b>cromo / oro</b>	02-0810/LL
04-0810/L	<b>dorato</b>	04-0810/LL
05-0810/L	<b>bronzo satinato</b>	05-0810/LL
06-0810/L	<b>rame vecchio</b>	06-0810/LL
12-0810/L	<b>ottone lucido</b>	12-0810/LL

**Art. 0850/L Edward Lever**

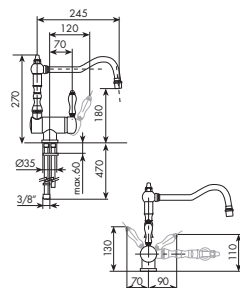


**Miscelatore per lavello c/leva laterale**

*Single lever mixer for sink side lever*

leva porcellana bianca		leva legno (noce)
01-0850/L	<b>cromato</b>	01-0850/LL
02-0850/L	<b>cromo / oro</b>	02-0850/LL
04-0850/L	<b>dorato</b>	04-0850/LL
05-0850/L	<b>bronzo satinato</b>	05-0850/LL
06-0850/L	<b>rame vecchio</b>	06-0850/LL
12-0850/L	<b>ottone lucido</b>	12-0850/LL

Art. 0850/R/L Edward Lever

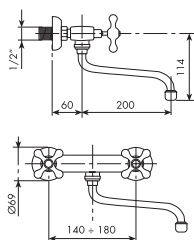


Miscelatore per lavello reclinabile c/leva laterale

Reclinable mixer for sink with lateral lever

leva porcellana bianca		leva legno (noce)
01-0850/R/L	<b>cromato</b>	01-0850/R/LL
02-0850/R/L	<b>cromo / oro</b>	02-0850/R/LL
04-0850/R/L	<b>dorato</b>	04-0850/R/LL
05-0850/R/L	<b>bronzo satinato</b>	05-0850/R/LL
06-0850/R/L	<b>rame vecchio</b>	06-0850/R/LL
12-0850/R/L	<b>ottone lucido</b>	12-0850/R/LL

Art. 0309/C Romina



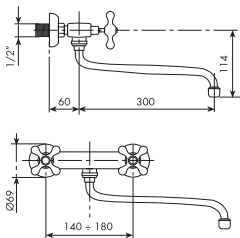
Gruppo per lavello a muro con bocca da 200 mm

Exposed group for sink with mm 200 spout

01-0309/C	<b>cromato</b>	09-0309/C	<b>canna fuc / oro</b>
02-0309/C	<b>cromo/oro</b>	12-0309/C	<b>ottone lucido</b>
04-0309/C	<b>dorato</b>	13-0309/C	<b>ottone naturale</b>
05-0309/C	<b>bronzo satinato</b>	14-0309/C	<b>bianco</b>
06-0309/C	<b>rame vecchio</b>	15-0309/C	<b>bianco / oro</b>
07-0309/C	<b>vecchio argento</b>	16-0309/C	<b>bianco / cromo</b>
08-0309/C	<b>canna fucile</b>	72-0309/C	<b>bronzo opaco</b>

Per ordine placchette in ceramica vedi tabella di riferimento ad inizio collezione Romina  
For ceramic disk please check the reference table at the beginning of the Romina section

Art. 0309/A/C Romina



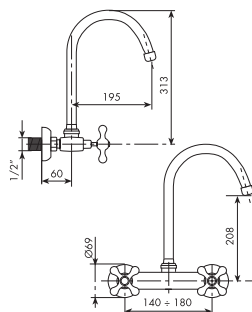
Gruppo per lavello a muro con bocca da 300 mm

Exposed group for sink with mm 300 spout

01-0309/A/C	<b>cromato</b>	09-0309/A/C	<b>canna fuc / oro</b>
02-0309/A/C	<b>cromo/oro</b>	12-0309/A/C	<b>ottone lucido</b>
04-0309/A/C	<b>dorato</b>	13-0309/A/C	<b>ottone naturale</b>
05-0309/A/C	<b>bronzo satinato</b>	14-0309/A/C	<b>bianco</b>
06-0309/A/C	<b>rame vecchio</b>	15-0309/A/C	<b>bianco / oro</b>
07-0309/A/C	<b>vecchio argento</b>	16-0309/A/C	<b>bianco / cromo</b>
08-0309/A/C	<b>canna fucile</b>	72-0309/A/C	<b>bronzo opaco</b>

Per ordine placchette in ceramica vedi tabella di riferimento ad inizio collezione Romina  
For ceramic disk please check the reference table at the beginning of the Romina section

Art. 0309/B/C Romina



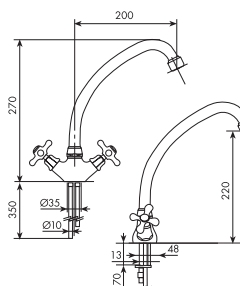
Gruppo per lavello a muro con bocca alta ad ombrello

Exposed group for sink with high umbrella spout

01-0309/B/C	<b>cromato</b>	09-0309/B/C	<b>canna fuc / oro</b>
02-0309/B/C	<b>cromo/oro</b>	12-0309/B/C	<b>ottone lucido</b>
04-0309/B/C	<b>dorato</b>	13-0309/B/C	<b>ottone naturale</b>
05-0309/B/C	<b>bronzo satinato</b>	14-0309/B/C	<b>bianco</b>
06-0309/B/C	<b>rame vecchio</b>	15-0309/B/C	<b>bianco / oro</b>
07-0309/B/C	<b>vecchio argento</b>	16-0309/B/C	<b>bianco / cromo</b>
08-0309/B/C	<b>canna fucile</b>	72-0309/B/C	<b>bronzo opaco</b>

Per ordine placchette in ceramica vedi tabella di riferimento ad inizio collezione Romina  
For ceramic disk please check the reference table at the beginning of the Romina section

Art. 0310/A/C Romina



Monoforo per lavello

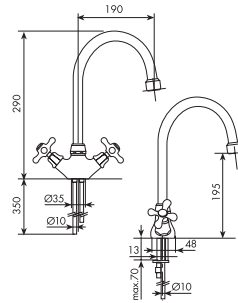
Single hole for sink

01-0310/A/C	<b>cromato</b>	09-0310/A/C	<b>canna fuc / oro</b>
02-0310/A/C	<b>cromo/oro</b>	12-0310/A/C	<b>ottone lucido</b>
04-0310/A/C	<b>dorato</b>	13-0310/A/C	<b>ottone naturale</b>
05-0310/A/C	<b>bronzo satinato</b>	14-0310/A/C	<b>bianco</b>
06-0310/A/C	<b>rame vecchio</b>	15-0310/A/C	<b>bianco / oro</b>
07-0310/A/C	<b>vecchio argento</b>	16-0310/A/C	<b>bianco / cromo</b>
08-0310/A/C	<b>canna fucile</b>	72-0310/A/C	<b>bronzo opaco</b>

Per ordine placchette in ceramica vedi tabella di riferimento ad inizio collezione Romina  
For ceramic disk please check the reference table at the beginning of the Romina section



**Art. 0310/B/C Romina**



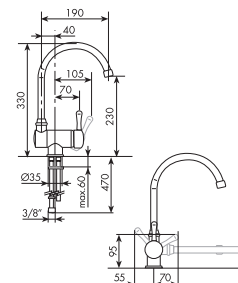
**Monoforo per livello bocca ad ombrello**

*Single hole for sink, umbrella spout*

01-0310/B/C <b>cromato</b>	09-0310/B/C <b>canna fuc / oro</b>
02-0310/B/C <b>cromo/oro</b>	12-0310/B/C <b>ottone lucido</b>
04-0310/B/C <b>dorato</b>	13-0310/B/C <b>ottone naturale</b>
05-0310/B/C <b>bronzo satinato</b>	14-0310/B/C <b>bianco</b>
06-0310/B/C <b>rame vecchio</b>	15-0310/B/C <b>bianco / oro</b>
07-0310/B/C <b>vecchio argento</b>	16-0310/B/C <b>bianco / cromo</b>
08-0310/B/C <b>canna fucile</b>	72-0310/B/C <b>bronzo opaco</b>

Per ordine placchette in ceramica vedi tabella di riferimento ad inizio collezione Romina  
 For ceramic disk please check the reference table at the beginning of the Romina section

**Art. 0350/R/C Romina**

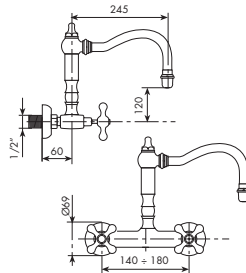
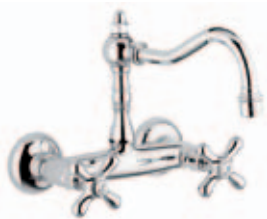


**Miscelatore per livello reclinabile c/leva laterale**

*Reclinable mixer for sink with lateral lever*

01-0350/R/C <b>cromato</b>	09-0350/R/C <b>canna fuc / oro</b>
02-0350/R/C <b>cromo/oro</b>	12-0350/R/C <b>ottone lucido</b>
04-0350/R/C <b>dorato</b>	13-0350/R/C <b>ottone naturale</b>
05-0350/R/C <b>bronzo satinato</b>	14-0350/R/C <b>bianco</b>
06-0350/R/C <b>rame vecchio</b>	15-0350/R/C <b>bianco / oro</b>
07-0350/R/C <b>vecchio argento</b>	16-0350/R/C <b>bianco / cromo</b>
08-0350/R/C <b>canna fucile</b>	72-0350/R/C <b>bronzo opaco</b>

**Art. 0709/C Charlotte**

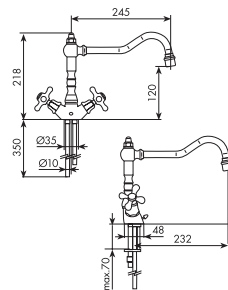


**Gruppo per livello a muro**

*Exposed group for sink*

01-0709/C <b>cromato</b>
05-0709/C <b>bronzo satinato</b>
06-0709/C <b>rame vecchio</b>

**Art. 0710/C Charlotte**

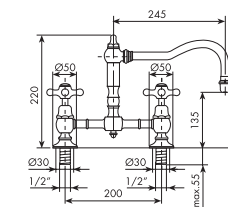


**Monoforo per livello**

*Single hole for sink*

01-0710/C <b>cromato</b>
05-0710/C <b>bronzo satinato</b>
06-0710/C <b>rame vecchio</b>

**Art. 0710/1/C Charlotte**

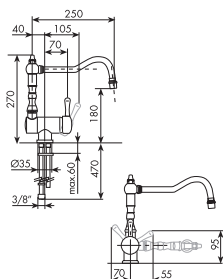


**Due fori per livello**

*2 holes for sink*

01-0710/1/C <b>cromato</b>
05-0710/1/C <b>bronzo satinato</b>
06-0710/1/C <b>rame vecchio</b>

Art. 0750/R/C Charlotte

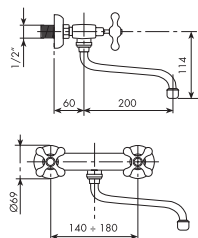


Miscelatore per lavello reclinabile c/leva laterale

Reclinable mixer for sink with lateral lever

01-0750/R/C	<b>cromato</b>
05-0750/R/C	<b>bronzo satinato</b>
06-0750/R/C	<b>rame vecchio</b>

Art. 4009/C Joconde

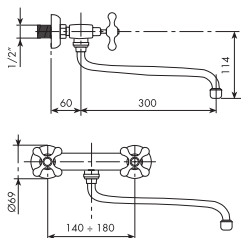


Gruppo per lavello a muro con bocca da 200 mm

Exposed group for sink with mm 200 spout

porcellana decorata		porcellana bianca
01-4009/C	<b>cromato</b>	01-4009/C/B
04-4009/C	<b>dorato</b>	04-4009/C/B

Art. 4009/A/C Joconde

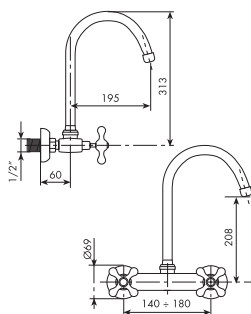


Gruppo per lavello a muro con bocca da 300 mm

Exposed group for sink with mm 300 spout

porcellana decorata		porcellana bianca
01-4009/A/C	<b>cromato</b>	01-4009/A/C/B
04-4009/A/C	<b>dorato</b>	04-4009/A/C/B

Art. 4009/B/C Joconde

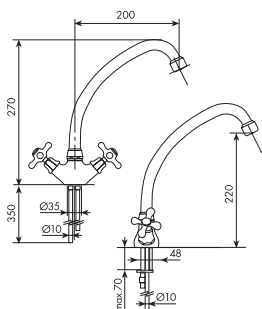


Gruppo per lavello a muro con bocca alta ad ombrello

Exposed group for sink with high umbrella spout

porcellana decorata		porcellana bianca
01-4009/B/C	<b>cromato</b>	01-4009/B/C/B
04-4009/B/C	<b>dorato</b>	04-4009/B/C/B

Art. 4010/A/C Joconde

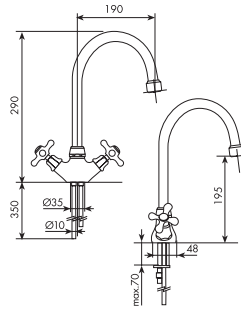


Monoforo per lavello

Single hole for sink

porcellana decorata		porcellana bianca
01-4010/A/C	<b>cromato</b>	01-4010/A/C/B
04-4010/A/C	<b>dorato</b>	04-4010/A/C/B

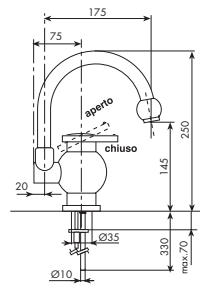
Art. 4010/B/C Joconde



**Monoforo per lavello bocca ad ombrello**  
Single hole for sink, umbrella spout

porcellana decorata		porcellana bianca
01-4010/B/C	<b>cromato</b>	01-4010/B/C/B
04-4010/B/C	<b>dorato</b>	04-4010/B/C/B

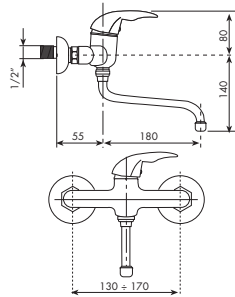
Art. 5010 Cygnus



**Miscelatore per lavello**  
Single lever mixer for sink

01-5010	<b>cromato</b>	18-5010	<b>nero / cromo</b>
02-5010	<b>cromo/oro</b>	53-5010	<b>canna fucile / cromo</b>
04-5010	<b>dorato</b>	66-5010	<b>bianco opaco</b>
09-5010	<b>canna fucile / oro</b>	67-5010	<b>nero opaco</b>
15-5010	<b>bianco / oro</b>	69-5010	<b>argento opaco</b>
16-5010	<b>bianco / cromo</b>	71-5010	<b>oro opaco</b>
17-5010	<b>nero / oro</b>		

Art. 8509 Krocus

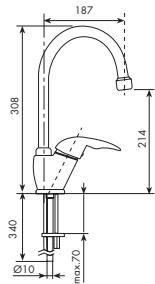


**Miscelatore per lavello a muro**  
Exposed single lever mixer for sink

		<b>prezzo senza leva</b> <b>price without lever</b>
01-8509	<b>cromato</b>	

Per ordine leva vedi tabella di riferimento ad inizio collezione Krocus.  
For lever order please check the reference table at the beginning of the Krocus collection section.

Art. 8510 Krocus

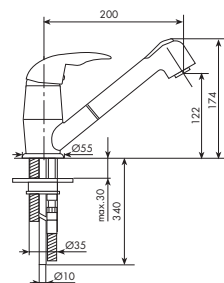


**Miscelatore per lavello**  
Single lever mixer for sink

		<b>prezzo senza leva</b> <b>price without lever</b>
01-8510	<b>cromato</b>	

Per ordine leva vedi tabella di riferimento ad inizio collezione Krocus.  
For lever order please check the reference table at the beginning of the Krocus collection section.

Art. 8510/1 Krocus



**Miscelatore per lavello c/doccetta estraibile**  
Single lever mixer for sink with extractable shower

		<b>prezzo senza leva</b> <b>price without lever</b>
01-8510/1	<b>cromato</b>	

Per ordine leva vedi tabella di riferimento ad inizio collezione Krocus.  
For lever order please check the reference table at the beginning of the Krocus collection section.

MANIGLIE	DESCRIZIONE	PER ART.	PAG. 568/580
Art. 034011	<b>Placchetta ceramica C Ø20</b> <i>Ceramic "C" indice Ø20</i>	0309/C, 0309/A/C, 0309/B/C, 0310/A/C, 0310/B/C, 0809/L, 0809/A/L, 0809/B/L, 0810/L, 0809/LL, 0809/A/LL, 0809/B/LL, 0810/LL, 0709/C, 0710/C, 0710/1/C	
Art. 034012	<b>Placchetta ceramica F Ø20</b> <i>Ceramic "F" indice Ø20</i>	0309/C, 0309/A/C, 0309/B/C, 0310/A/C, 0310/B/C, 0809/L, 0809/A/L, 0809/B/L, 0810/L, 0809/LL, 0809/A/LL, 0809/B/LL, 0810/LL, 0709/C, 0710/C, 0710/1/C	
Art. 034014	<b>Maniglia con vite RO</b> <i>RO handle lever with screw</i>	0309/C, 0309/A/C, 0309/B/C, 0310/A/C, 0310/B/C, 0709/C, 0710/C, 0710/1/C	
Art. 036017	<b>Placchetta metallo neutra Ø20</b> <i>Plain metal indice Ø20</i>		
Art. 084001	<b>Maniglia ED con vite</b> <i>ED handle lever with screw</i>	0809/C, 0809/A/C, 0809/B/C, 0810/C	
Art. 084006	<b>Leva Lever completa C appoggio PB</b> <i>Complete standing "C" L lever white porcelain</i>	0810/L	
Art. 084007	<b>Leva Lever completa F appoggio PB</b> <i>Complete standing "F" L lever white porcelain</i>	0810/L	
Art. 084008	<b>Leva Lever completa C appoggio Legno</b> <i>Complete standing "C" L lever wood</i>	0810/LL	
Art. 084009	<b>Leva Lever completa F appoggio Legno</b> <i>Complete standing "F" L lever wood</i>	0810/LL	
Art. 084010	<b>Leva Lever completa C a muro PB</b> <i>Complete wall "C" L lever white porcelain</i>	0809/L, 0809/A/L, 0809/B/L	
Art. 084011	<b>Leva Lever completa F a muro PB</b> <i>Complete wall "F" L lever white porcelain</i>	0809/L, 0809/A/L, 0809/B/L	
Art. 084012	<b>Leva Lever completa C a muro Legno</b> <i>Complete wall "C" L lever wood</i>	0809/LL, 0809/A/LL, 0809/B/LL	
Art. 084013	<b>Leva Lever Completa F a muro Legno</b> <i>Complete wall "F" L lever wood</i>	0809/LL, 0809/A/LL, 0809/B/LL	
Art. 084027	<b>Placchetta porcellana hot Ø26 completa</b> <i>Complete "Hot" porcelain indice Ø26</i>	0809/C, 0809/A/C, 0809/B/C, 0810/C	
Art. 084028	<b>Placchetta porcellana cold Ø26 completa</b> <i>Complete "Cold" porcelain indice Ø26</i>	0809/C, 0809/A/C, 0809/B/C, 0810/C	
Art. 086016	<b>Insero sagomato Legno per leva</b> <i>Moulded insert wood for lever</i>	0809/LL, 0809/A/LL, 0809/B/LL, 0810/LL, 1509/LL, 1509/A/LL, 1510/LL	
Art. 087001	<b>Insero sagomato PB per leva</b> <i>Moulded insert white porcelain for lever</i>	0809/L, 0809/A/L, 0809/B/L, 0810/L, 1509, 1509/A, 1510	
Art. 104014	<b>Leva PA completa</b> <i>Complete PA lever</i>	1009, 1009/A, 1010	
Art. 154001	<b>Leva completa PB Noël</b> <i>Complete white porcelain lever</i>	1509, 1509/A, 1510	
Art. 154002	<b>Leva completa in Legno Noël</b> <i>Complete Noël wooden lever</i>	1509/LL, 1509/A/LL, 1510/LL	
Art. 404001	<b>Maniglia J PB</b> <i>White porcelain J handle lever</i>	4009/C, 4009/A/C, 4009/B/C, 4010/A/C, 4010/B/C	
Art. 404002	<b>Maniglia J P/decorata</b> <i>Decorated porcelain J handle lever</i>	4009/C, 4009/A/C, 4009/B/C, 4010/A/C, 4010/B/C	
Art. 406006	<b>Placchetta metallo neutra Ø22</b> <i>Plain metal indice Ø22</i>	4009/C, 4009/A/C, 4009/B/C, 4010/A/C, 4010/B/C	
Art. 504004	<b>Maniglia anteriore Cygnus</b> <i>Cygnus top handle lever</i>	5010	
Art. 507001	<b>Placchetta superiore Ø 44</b> <i>Top plaque Ø44</i>	5010	
Art. 854001	<b>Leva K completa</b> <i>Complete K Lever</i>	8509, 8510, 8510/1	
Art. 856005	<b>Leva K cromata completa</b> <i>Chromed complete K Lever</i>	8509, 8510, 8510/1	

DOCLETTE	DESCRIZIONE	PER ART.	PAG. 581
Art. 025009	<b>Doccetta estraibile</b> <i>Extractable handset</i>	8510/1	
<b>BASETTE</b>			<b>PAG. 592</b>
Art. 506001	<b>Basetta CY</b> <i>CY base</i>	5010	
<b>AERATORI</b>			<b>PAG. 598/599</b>
Art. 034005	<b>Areatore Ø24 maschio completo</b> <i>Complete male aerator Ø24</i>	5010	
Art. 034013	<b>Areatore Ø24 femmina classic completo</b> <i>Complete classic female joint Ø24</i>	0809/C, 0809/A/C, 0809/B/C, 0810/C, 0809/L, 0809/A/L, 0809/B/L, 0810/L, 0850/L, 0850/R/L, 0309/C, 0309/A/C, 0309/B/C, 0310/A/C, 0310/B/C, 0350/R/C, 4009/C, 4009/A/C, 4009/B/C, 4010/A/C, 4010/B/C, 0709/C, 0710/C, 0710/1/C, 0750/R/C, 8509, 8510	
Art. 104024	<b>Areatore vittoriano Ø24 femmina completo</b> <i>Complete Victorian female aerator Ø24</i>	1009, 1009/A, 1010, 1509, 1509/A, 1510	
<b>BOCCE</b>			<b>PAG. 600/603</b>
Art. 034024	<b>Bocca completa a ombrello 190 mm</b> <i>Complete spout mm 190 suitable</i>	0309/B/C, 0310/B/C, 0350/R/C, 4009/B/C, 4010/B/C	
Art. 034039	<b>Canna completa livello classic 200 mm</b> <i>Complete classic spout mm 200 for sink</i>	0809/C, 0809/L, 0309/C	
Art. 034040	<b>Bocca completa a gancio 200 mm</b> <i>Complete hook spout mm 200</i>	0310/A/C, 4010/A/C	
Art. 034079	<b>Canna completa livello classic 300 mm</b> <i>Complete classic spout mm 300 for sink</i>	0809/A/C, 0809/A/L, 0309/A/C, 4009/A/C	
Art. 074011	<b>Piantone per livello completo s/bocca</b> <i>Column for sink without spout</i>	0809/B/C, 0810/C, 0809/B/L, 0810/L, 0850/L, 0850/R/L, 0709/C, 0710/C, 0710/1/C, 0750/R/C	
Art. 074012	<b>Bocca livello girevole 245 mm completa</b> <i>Complete swinging spout mm 245 for basin</i>	0809/B/C, 0810/C, 0809/B/L, 0810/L, 0850/L, 0850/R/L, 0709/C, 0710/C, 0710/1/C, 0750/R/C	
Art. 104016	<b>Canna completa livello vittoriana 200 mm</b> <i>Complete Victorian spout mm 200 for sink</i>	1009, 1509	
Art. 104017	<b>Canna completa mix cucina 225 mm</b> <i>Complete spout mm 225 for sink</i>	1010, 1510	
Art. 104031	<b>Canna completa livello vittoriana 300 mm</b> <i>Complete Victorian spout mm 300 for sink</i>	1009/A, 1509/A	
Art. 954012	<b>Canna completa livello SP 180 mm</b> <i>Complete SP spout for sink mm 180</i>	8509	
<b>COPRI CARTUCCE</b>			<b>PAG. 604/605</b>
Art. 025004	<b>Copricartuccia per Ø35 K</b> <i>Retaining ring for K cartridge Ø35</i>	8509, 8510, 8510/1	
Art. 036013	<b>Copriasta I. 24 mm</b> <i>Sleeve mm 24</i>	0809/C, 0809/A/C, 0809/B/C, 0810/C, 0809/L, 0809/A/L, 0809/B/L, 0810/L, 0309/C, 0309/A/C, 0309/B/C, 0310/A/C, 0310/B/C, 4009/C, 4009/A/C, 4009/B/C, 4010/A/C, 4010/B/C, 0709/C, 0710/C, 0710/1/C	
Art. 036025	<b>Coprivotone RO</b> <i>RO shield</i>	0309/C, 0309/A/C, 0309/B/C, 0310/A/C, 0310/B/C, 4009/C, 4009/A/C, 4009/B/C, 4010/A/C, 4010/B/C, 0709/C, 0710/C, 0710/1/C	
Art. 086001	<b>Coprivotone ED</b> <i>ED Shield</i>	0809/C, 0809/A/C, 0809/B/C, 0810/C, 0809/L, 0809/A/L, 0809/B/L, 0810/L	
Art. 106016	<b>Copricartuccia filetto maschio Ø42</b> <i>Retaining ring for cartridge male threading Ø42</i>	1009, 1009/A, 1010, 1509, 1509/A, 1510	
<b>CARTUCCE</b>			<b>PAG. 606/607</b>
Art. 025002	<b>Cartuccia Ø35 s/dist</b> <i>Cartridge Ø35 without filling device</i>	1009, 1009/A, 1010, 1509, 1509/A, 1510, 8510	
Art. 505001	<b>Cartuccia Ø40 s/dist. Hydro per art.</b> <i>Cartridge Ø40 without Hydro filling device for art.</i>	5010, 0850/L	
<b>VITONI</b>			<b>PAG. 608/610</b>
Art. 035046	<b>Vitone destro serie classiche a dischi ceramici</b> <i>Right ceramic disc valve for classical series</i>	0809/C, 0809/A/C, 0809/B/C, 0810/C, 0809/L, 0809/A/L, 0809/B/L, 0810/L, 0309/C, 0309/A/C, 0309/B/C, 0310/A/C, 0310/B/C, 4009/C, 4009/A/C, 4009/B/C, 4010/A/C, 4010/B/C, 0709/C, 0710/C, 0710/1/C	
Art. 085003	<b>Vitone sinistro serie classiche a dischi ceramici</b> <i>Left ceramic disc valve for classical series</i>	0809/L, 0809/A/L, 0809/B/L, 0810/L	