

# BELLOSTA

LISTINO MODERNO | 80.2013

CURA, ATTENZIONE, TECNICHE D'AVANGUARDIA, GUSTO, STILE ED ESPERIENZA, SONO GLI INGREDIENTI DELLE COLLEZIONI D'AUTORE BELLOSTA RUBINETTERIE

GRAZIE PER LA FIDUCIA

PRODOTTO INTERAMENTE IN ITALIA



CARE, ATTENTION, AVANTGARDE TECHNIQUE, TASTE, STYLE AND EXPERIENCE ARE THE INGREDIENTS OF THE BELLOSTA RUBINETTERIE COLLECTIONS

THANKS FOR THE TRUST

COMPLETELY MADE IN ITALY





# VOGUE LIGHT

EQB DESIGN



<b>LAVABO</b>	662
<b>LAVABO TRADIZIONALE</b>	665
<b>BIDET</b>	664
<b>BIDET TRADIZIONALE</b>	665
<b>DOCCIA</b>	
incasso	666
incasso termostatico	668
esterno	670
<b>VASCA</b>	671
<b>VASCA TRADIZIONALE</b>	672
<b>COMPLEMENTI</b>	673
<b>COMPOSIZIONI DOCCIA</b>	676
<b>INDICE RICAMBI</b>	678

VOGUE  
LIGHT

**FINITURE DI SERIE - COLLEZIONE VOGUE LIGHT**

**01** | cromo  
chrome

**B-COLORS!**

**02** | cromo / oro  
chrome / gold

**06** | rame vecchio  
old copper

**10** | verderame  
verdigris

**14** | bianco  
white

**18** | nero / cromo  
black / chrome

**22** | verdino / cromo  
light green / chrome

**26** | cromo sat / cromo  
satin chrome / chrome

**30** | nickel c/prot  
prot nickel

**34** | cromo spazzolato  
brushing chrome

**54** | cromo / leva cromo sat  
chrome / sat chrome lever

**58** | verdino  
light green

**63** | nickel  
nickel

**69** | argento opaco  
mat silver

**03** | oro / argento  
gold / silver

**07** | vecchio argento  
old silver

**11** | nero antracite  
anthracite black

**15** | bianco / oro  
white / gold

**19** | nero  
black

**23** | marrone / cromo  
brown / chrome

**27** | cromo sat / oro  
satin chrome / gold

**31** | nickel c/prot / oro  
prot nickel / gold

**35** | nickel spazzolato  
brushing nickel

**55** | nickel sat / oro  
satin nickel / gold

**59** | marrone  
brown

**66** | bianco opaco  
mat white

**71** | oro opaco  
mat gold

**04** | dorato  
gold

**08** | canna fucile  
gun barrel

**12** | ottone lucido  
polished brass

**16** | bianco / cromo  
white / chrome

**20** | avorio / cromo  
ivory / chrome

**24** | arancio / cromo  
orange / chrome

**28** | nickel satinato  
satin nickel

**32** | nickel c/prot / cromo  
prot nickel / chrome

**36** | nickel spazzolato / oro  
brushing nickel / gold

**56** | avorio  
ivory

**60** | arancio  
orange

**67** | nero opaco  
mat black

**72** | bronzo opaco  
mat bronze

**05** | bronzo satinato  
satin bronze

**09** | canna fucile / oro  
gun barrel / gold

**13** | ottone naturale  
natural brass

**17** | nero / oro  
black / gold

**21** | azzurro / cromo  
light blue / chrome

**25** | rosso / cromo  
red / chrome

**29** | nickel sat / cromo  
satin nickel / chrome

**33** | cromo satinato  
satin chrome

**53** | canna fucile / cromo  
gun barrel / chrome

**57** | azzurro  
light blue

**61** | rosso  
red

**68** | rame opaco  
mat copper

**75** | dorato spazzolato  
brushing gold



**progetto**  
"SUMISURA"

Per ogni esigenza progettuale, è possibile richiedere una finitura non presente di serie nella collezione scelta, grazie al team PROGETTO SU MISURA, che realizzerà ad hoc il prodotto.

I tecnici Bellosta Rubinetterie sono, inoltre, a disposizione di architetti e designer, per offrire un servizio esclusivo, personalizzando gli elementi in funzione di specifiche richieste estetiche o problematiche legate a vincoli progettuali, e per verificare la fattibilità attraverso opportuni studi CAD e sviluppare il disegno tecnico del prodotto speciale richiesto.

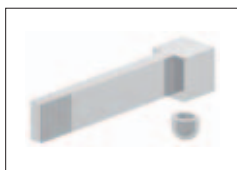
Per informazioni e richieste PROGETTI SU MISURA:  
[ufficiotecnico@bellostarubinetterie.com](mailto:ufficiotecnico@bellostarubinetterie.com)

For every requirements is possible to ask a finished that is not presented in the catalogue thanks to the team of PROGETTO SU MISURA, that will make the project.

The Bellosta Rubinetterie technician are available for designers and architects, to offer this service to all designers, making components to measure to meet specific, functional or design-dictated requirements, and to verify the possibility of making of the project by CAD used and technical scheme.

For informations and PROJECTS "SU MISURA" requests:  
[ufficiotecnico@bellostarubinetterie.com](mailto:ufficiotecnico@bellostarubinetterie.com)

**LE LEVE - MISCELATORE THE LEVER - MIXER:**



cod. leva cromo 01



cod. leva wengé 39

**THE LEVER - TRADIZIONALE THE LEVER - TRADIZIONAL:**



cod. leva cromo 01



cod. leva wengé 39

**CONSIGLIO TECNICO:**

tutti i miscelatori della collezione VOGUE LIGHT vengono collaudati nel loro funzionamento al momento dell'assemblaggio.

Per garantire la durata della cartuccia nel tempo, si consiglia di spurgare bene l'impianto idraulico prima del montaggio (per rimuovere eventuali detriti) e di installare:

Rubinetti sottolavabo con filtro

modello coordinato art. 0920 (vedi pag. 857)

modello standard art. 020/1 (vedi pag. 858).

**TECHNICAL ADVICE:**

all mixers of the VOGUE LIGHT collection are perfectly tested. To guarantee the perfect functionality of the cartridge for a long time,

we advise to clean the sanitary plant before installing the mixer.

Moreover we advise to install:

Angle valve with filter

coordinated model

art. 0920 (see page 857)

standard model

art. 020/1 (see page 858).

N.B.:

Qualora il piano lavabo avesse uno spessore superiore a 6 cm specificare misura al momento dell'ordine.

Attention:

If the lavatory top is more than cm 6 thick, please point it out when placing the order.

LAVABO | BIDET: miscelatore



**Art. 3705** p. 662  
Miscelatore per lavabo  
*Single lever mixer for basin*



**Art. 3705/1** p. 662  
Miscelatore per lavabo  
sovrapiano 160 mm  
*Single lever mixer for higher  
level basin mm 160*



**Art. 3705/1/A** p. 662  
Miscelatore per lavabo  
sovrapiano 80 mm  
*Single lever mixer for higher  
level basin mm 80*



**Art. 3705/3** p. 662  
Miscelatore per lavabo a  
muro su piastra, c/bocca  
erogazione da 190÷205 mm  
*Wall mounted single lever  
mixer for basin on plate with  
wall spout mm 190÷205*



**Art. 3705/3/1** p. 663  
Miscelatore per lavabo a  
muro su piastra, c/bocca  
erogazione da 245÷260 mm  
*Wall mounted single lever mixer  
for basin on plate with wall  
spout mm 245÷260*



**Art. 3705/3/A** p. 663  
Miscelatore per lavabo a  
muro c/bocca erogazione  
da 170 mm  
*Wall mounted single lever  
mixer for basin with wall spout  
mm 170*



**Art. 3705/3/B** p. 663  
Miscelatore per lavabo a  
muro c/bocca erogazione  
da 225 mm  
*Wall mounted single lever  
mixer for basin with wall spout  
mm 225*



**Art. 3707** p. 664  
Miscelatore per bidet  
*Single lever mixer for bidet*

LAVABO | BIDET: tradizionale



**Art. 6805** p. 665  
Batteria per lavabo 3 fori  
*3 holes basin mixer*



**Art. 6805/3** p. 665  
Gruppo per lavabo a muro  
c/bocca erogazione da  
170 mm  
*Wall mounted basin mixer with  
wall spout mm 170*



**Art. 6805/3/1** p. 665  
Gruppo per lavabo a muro  
c/bocca erogazione da  
225 mm  
*Wall mounted basin mixer with  
wall spout mm 225*



**Art. 6807** p. 665  
Batteria per bidet 3 fori  
c/salterello  
*3 holes bidet mixer with pop-  
up waste*

DOCCIA: incasso



**Art. 3021** p. 666  
Miscelatore incasso 1 OUT  
*Built-in single lever mixer 1  
OUT*



**Art. 3000** p. 666  
Miscelatore incasso c/ pul-  
sante 2 OUT  
*Built-in single lever mixer with  
diverter pulse 2 OUT*



**Art. 6503/2** p. 666  
Deviatore incasso completo  
due uscite  
*Complete two ways built-in  
diverter*



**Art. 6503/3** p. 667  
Deviatore incasso completo  
tre uscite  
*Complete three ways built-in  
diverter*



**Art. 6503/4** p. 667  
Deviatore incasso completo  
quattro uscite  
*Complete four ways built-in  
diverter*

**DOCCIA: incasso termostatico**



**Art. 0912/P** p. 668  
**Miscelatore incasso termostatico 1 OUT bassa portata**  
*Built in thermostatic mixer 1 OUT less rate*



**Art. 0912/2/P** p. 668  
**Miscelatore incasso termostatico 2 OUT bassa portata**  
*Built in thermostatic mixer 2 OUT less rate*



**Art. 0912/3/P** p. 668  
**Miscelatore incasso termostatico 3 OUT bassa portata**  
*Built in thermostatic mixer 3 OUT less rate*



**Art. 0912/4/P** p. 669  
**Miscelatore incasso termostatico 4 OUT bassa portata**  
*Built in thermostatic mixer 4 OUT less rate*

**DOCCIA: esterno**



**Art. 3009/1** p. 670  
**Miscelatore esterno per doccia s/duplex completo**  
*Exposed single lever mixer for shower without complete shower kit*



**Art. 6513/4** p. 670  
**Curva presa d'acqua per doccia c/stelo e soffione**  
*Water connector for high shower plate and pipe*



**Art. 6513/5/1** p. 670  
**Curva presa acqua per doccia c/stelo e soffione, c/deviatore e scorrevole**  
*Water connector for high shower plate and pipe with sliding shower kit and shower head*



**Art. 6731** p. 670  
**Bocca erogazione per doccia a muro da 360 mm**  
*Wall spout mm 360 for shower*



**Art. 6731/1** p. 670  
**Bocca erogazione per doccia a soffitto da 400 mm**  
*Ceiling shower arm mm 400*

**VASCA**



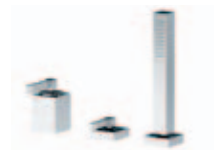
**Art. 3000** p. 671  
**Miscelatore incasso c/ pulsante 2 OUT**  
*Built-in single lever mixer with diverter pulse 2 OUT*



**Art. 6703** p. 671  
**Bocca erogazione a muro per vasca**  
*Wall spout for bath*



**Art. 3701/2** p. 671  
**Batteria per bordo vasca 4 fori**  
*4 holes bath mixer to be fitted on bath rim*



**Art. 3001/20** p. 671  
**Batteria per bordo vasca 3 fori s/bocca erogazione**  
*3 holes bath mixer without spout to be fitted on bath rim*



**Art. 6701/26** p. 672  
**Bocca erogazione da pavimento per vasca**  
*Floor spout for bath*



**Art. 3701/A** p. 672  
**Miscelatore esterno per vasca c/gancio fisso completo**  
*Exposed single lever mixer for bath with complete shower kit (fixed hook)*



**Art. 3701/B** p. 672  
**Miscelatore esterno per vasca c/gancio fisso completo e duplex**  
*Exposed single lever mixer for bath with complete shower kit (fixed hook) and movable hook*



**Art. 6801/2** p. 672  
**Batteria per bordo vasca 5 fori**  
*5 holes bath mixer to be fitted on bath rim*

COMPLEMENTI



**Art. 6503/1/A** p. 673  
**Gancio incasso fisso completo**  
*Complete shower kit (fixed hook)*



**Art. 6503/1** p. 673  
**Duplex incasso completo**  
*Complete shower kit (movable hook)*



**Art. 6530** p. 673  
**Saliscendi completo c/presa d'acqua**  
*Complete wall pipe with water connection*



**Art. 6530/1** p. 673  
**Saliscendi**  
*Wall pipe*



**Art. 6608/S** p. 673  
**Rubinetto incasso da 1/2" sinistro**  
*Left built-in stop cock 1/2"*

**Art. 6608/D** p. 673  
**Rubinetto incasso da 1/2" destro**  
*Right built-in stop cock 1/2"*



**Art. 6608/1/S** p. 674  
**Rubinetto incasso da 3/4" sinistro**  
*Left built-in stop cock 3/4"*

**Art. 6608/1/D** p. 674  
**Rubinetto incasso da 3/4" destro**  
*Right built-in stop cock 3/4"*



**Art. 6540** p. 674  
**Passo rapido da 3/4"**  
*Built-in rapid flow cock 3/4"*

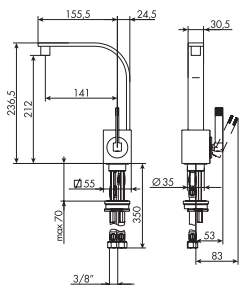


**Art. 6540/1** p. 675  
**Passo rapido da 1"**  
*Built-in rapid flow cock 1"*



**Art. 6532/2** p. 675  
**Saracinesca da 3/4"**  
*Gate valve 3/4"*

Art. 3705



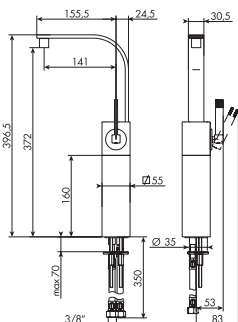
Miscelatore per lavabo  
Single lever mixer for basin

01-3705- \* cromato

\* completare il codice dell'articolo con il codice della leva scelta, vedi inizio collezione.  
\* please complete the article code by adding the code of the choosen lever, see beginning page of the collection.

\*Per UP/DOWN vedi pag. 845/846 \*For UP/DOWN see page 845/846

Art. 3705/1



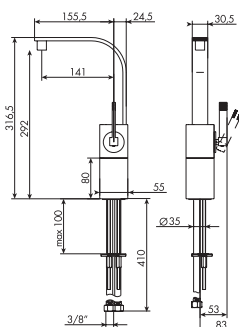
Miscelatore per lavabo sovrapiano 160 mm  
Single lever mixer for higher level basin mm 160

01-3705/1- \* cromato

\* completare il codice dell'articolo con il codice della leva scelta, vedi inizio collezione.  
\* please complete the article code by adding the code of the choosen lever, see beginning page of the collection.

\*Per UP/DOWN vedi pag. 845/846 \*For UP/DOWN see page 845/846

Art. 3705/1/A



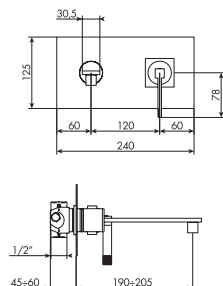
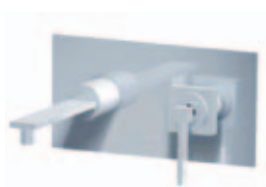
Miscelatore per lavabo sovrapiano 80 mm  
Single lever mixer for higher level basin mm 80

01-3705/1/A- \* cromato

\* completare il codice dell'articolo con il codice della leva scelta, vedi inizio collezione.  
\* please complete the article code by adding the code of the choosen lever, see beginning page of the collection.

\*Per UP/DOWN vedi pag. 845/846 \*For UP/DOWN see page 845/846

Art. 3705/3

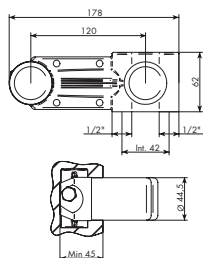


Miscelatore per lavabo a muro su piastra, c/bocca erogazione da 190-205 mm  
Wall mounted single lever mixer for basin on plate with wall spout mm 190-205

01-3705/3- \* cromato

\* completare il codice dell'articolo con il codice della leva scelta, vedi inizio collezione.  
\* please complete the article code by adding the code of the choosen lever, see beginning page of the collection.

\*Per UP/DOWN vedi pag. 845/846 \*For UP/DOWN see page 845/846



Art. 3705/3/E

Parti esterne per miscelatore per lavabo a muro su piastra, c/bocca erogazione da 190-205 mm  
External parts for wall mounted single lever mixer for basin on plate with wall spout mm 190-205

01-3705/3/E- \* cromato

\* completare il codice dell'articolo con il codice della leva scelta, vedi inizio collezione.  
\* please complete the article code by adding the code of the choosen lever, see beginning page of the collection.

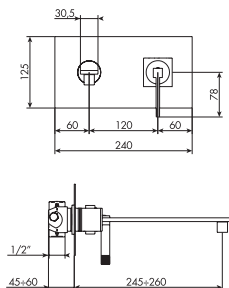
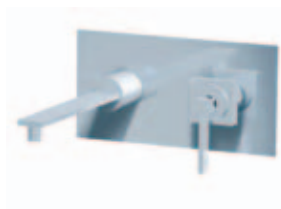
Art. 304011

Parti incasso per miscelatore per lavabo a muro  
Built-in parts for wall mounted single lever mixer for basin

01-304011 cromato



## Art. 3705/3/1



**Miscelatore per lavabo a muro su piastra, c/bocca erogazione da 245-260 mm**  
 Wall mounted single lever mixer for basin on plate with wall spout mm 245-260

01-3705/3/1- \* cromato

\* completare il codice dell'articolo con il codice della leva scelta, vedi inizio collezione.  
 \* please complete the article code by adding the code of the choosen lever, see beginning page of the collection.

\*Per UP/DOWN vedi pag. 845/846 \*For UP/DOWN see page 845/846

## Art. 3705/3/1/E

**Parti esterne per miscelatore per lavabo a muro su piastra, c/bocca erogazione da 245-260 mm**  
 External parts for wall mounted single lever mixer for basin on plate with wall spout mm 245-260

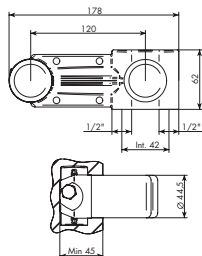
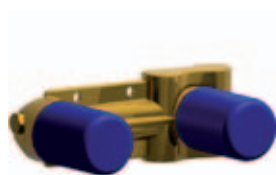
01-3705/3/1/E- \* cromato

\* completare il codice dell'articolo con il codice della leva scelta, vedi inizio collezione.  
 \* please complete the article code by adding the code of the choosen lever, see beginning page of the collection.

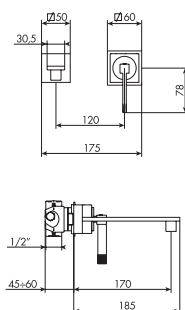
## Art. 304011

**Parti incasso per miscelatore per lavabo a muro**  
 Built-in parts for wall mounted single lever mixer for basin

01-304011 cromato



## Art. 3705/3/A



**Miscelatore per lavabo a muro c/bocca erogazione da 170 mm**  
 Wall mounted single lever mixer for basin with wall spout mm 170

01-3705/3/A- \* cromato

\* completare il codice dell'articolo con il codice della leva scelta, vedi inizio collezione.  
 \* please complete the article code by adding the code of the choosen lever, see beginning page of the collection.

\*Per UP/DOWN vedi pag. 845/846 \*For UP/DOWN see page 845/846

## Art. 3705/3/A/E

**Parti esterne per miscelatore per lavabo a muro c/bocca erogazione da 170 mm**  
 External parts for wall mounted single lever mixer for basin with wall spout mm 170

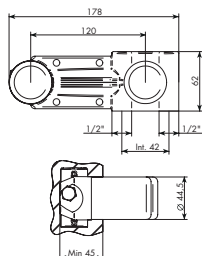
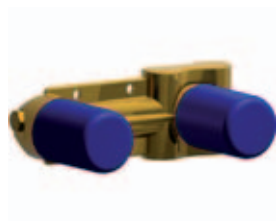
01-3705/3/A/E- \* cromato

\* completare il codice dell'articolo con il codice della leva scelta, vedi inizio collezione.  
 \* please complete the article code by adding the code of the choosen lever, see beginning page of the collection.

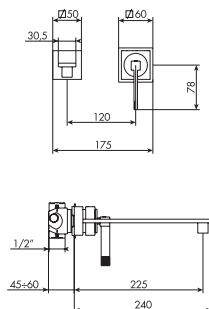
## Art. 304011

**Parti incasso per miscelatore per lavabo a muro**  
 Built-in parts for wall mounted single lever mixer for basin

01-304011 cromato



## Art. 3705/3/B

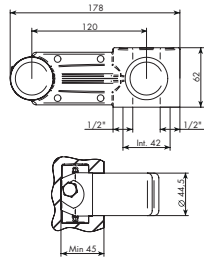
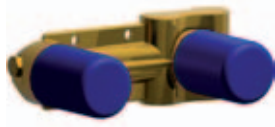


**Miscelatore per lavabo a muro c/bocca erogazione da 225 mm**  
 Wall mounted single lever mixer for basin with wall spout mm 225

01-3705/3/B- \* cromato

\* completare il codice dell'articolo con il codice della leva scelta, vedi inizio collezione.  
 \* please complete the article code by adding the code of the choosen lever, see beginning page of the collection.

\*Per UP/DOWN vedi pag. 845/846 \*For UP/DOWN see page 845/846

**Art. 3705/3/B/E**

**Parti esterne per miscelatore per lavabo a muro c/bocca erogazione da 225 mm**  
*External parts for wall mounted single lever mixer for basin with wall spout mm 225*

01-3705/3/B/E- \* **cromato**

\* completare il codice dell'articolo con il codice della leva scelta, vedi inizio collezione.

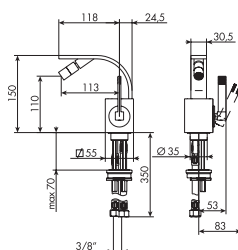
*\* please complete the article code by adding the code of the choosen lever, see beginning page of the collection.*

**Art. 304011**

**Parti incasso per miscelatore per lavabo a muro**

*Built-in parts for wall mounted single lever mixer for basin*

01-304011 **cromato**

**Art. 3707****Miscelatore per bidet**

*Single lever mixer for bidet*

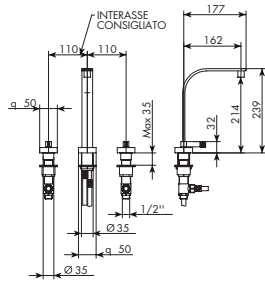
01-3707- \* **cromato**

\* completare il codice dell'articolo con il codice della leva scelta, vedi inizio collezione.

*\* please complete the article code by adding the code of the choosen lever, see beginning page of the collection.*

\*Per UP/DOWN vedi pag. 845/846 \*For UP/DOWN see page 845/846

## Art. 6805

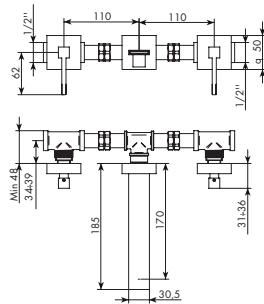

**Batteria per lavabo 3 fori**  
 3 holes basin mixer

01-6805- \* cromato

\* completare il codice dell'articolo con il codice della leva scelta, vedi inizio collezione.

\* please complete the article code by adding the code of the choosen lever, see beginning page of the collection.

## Art. 6805/3

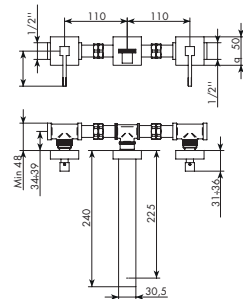

**Gruppo per lavabo a muro c/bocca erogazione da 170 mm**  
 Wall mounted basin mixer with wall spout mm 170

01-6805/3- \* cromato

\* completare il codice dell'articolo con il codice della leva scelta, vedi inizio collezione.

\* please complete the article code by adding the code of the choosen lever, see beginning page of the collection.

## Art. 6805/3/1

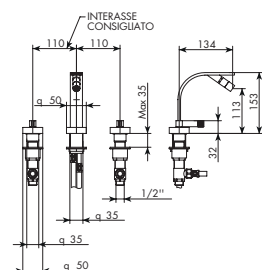

**Gruppo per lavabo a muro c/bocca erogazione da 225 mm**  
 Wall mounted basin mixer with wall spout mm 225

01-6805/3/1- \* cromato

\* completare il codice dell'articolo con il codice della leva scelta, vedi inizio collezione.

\* please complete the article code by adding the code of the choosen lever, see beginning page of the collection.

## Art. 6807

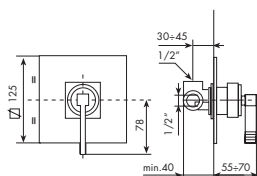

**Batteria per bidet 3 fori c/salterello**  
 3 holes bidet mixer with pop-up waste

01-6807- \* cromato

\* completare il codice dell'articolo con il codice della leva scelta, vedi inizio collezione.

\* please complete the article code by adding the code of the choosen lever, see beginning page of the collection.

## Art. 3021

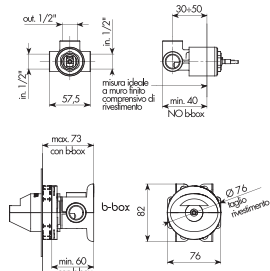
**Miscelatore incasso 1 OUT**

Built-in single lever mixer 1 OUT

01-3021- \* cromato

\* completare il codice dell'articolo con il codice della leva scelta, vedi inizio collezione.

\* please complete the article code by adding the code of the choosen lever, see beginning page of the collection.

**Art. 3021/E****Parti esterne per miscelatore incasso 1 OUT**

External parts for built-in single lever mixer 1 OUT

01-3021/E- \* cromato

\* completare il codice dell'articolo con il codice della leva scelta, vedi inizio collezione.

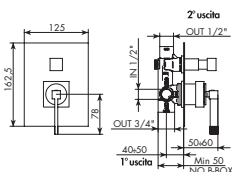
\* please complete the article code by adding the code of the choosen lever, see beginning page of the collection.

**Art. 304004****Corpo incasso 1 OUT attacchi ingresso acqua da 1/2"**

Built-in part 1 OUT with 1/2" water connection

01-304004 cromato

## Art. 3000

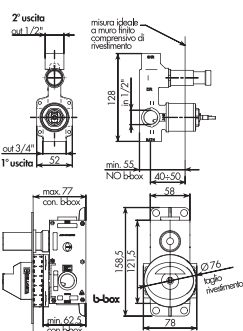
**Miscelatore incasso c/ pulsante 2 OUT**

Built-in single lever mixer with diverter pulse 2 OUT

01-3000- \* cromato

\* completare il codice dell'articolo con il codice della leva scelta, vedi inizio collezione.

\* please complete the article code by adding the code of the choosen lever, see beginning page of the collection.

**Art. 3000/E****Parti esterne per miscelatore incasso c/ pulsante 2 OUT**

External parts for built-in single lever mixer with diverter pulse 2 OUT

01-3000/E- \* cromato

\* completare il codice dell'articolo con il codice della leva scelta, vedi inizio collezione.

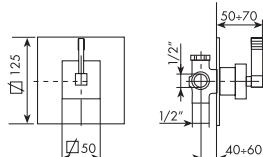
\* please complete the article code by adding the code of the choosen lever, see beginning page of the collection.

**Art. 304003****Corpo incasso c/ pulsante 2 OUT attacchi ingresso acqua da 1/2" °**

Built-in part with diverter pulse 2 OUT with 1/2" water connection °

01-304003 cromato

## Art. 6503/2

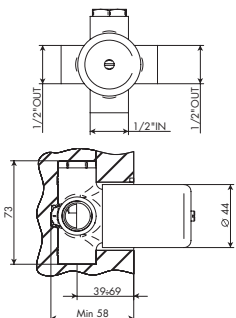
**Deviatore incasso completo due uscite**

Complete two ways built-in diverter

01-6503/2- \* cromato

\* completare il codice dell'articolo con il codice della leva scelta, vedi inizio collezione.

\* please complete the article code by adding the code of the choosen lever, see beginning page of the collection.

**Art. 6503/2/E****Parti esterne per deviatore incasso completo due uscite***External parts for complete two ways built-in diverter*

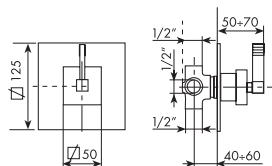
01-6503/2/E- \* cromato

\* completare il codice dell'articolo con il codice della leva scelta, vedi inizio collezione.

\* please complete the article code by adding the code of the choosen lever, see beginning page of the collection.

**Art. 914016****Parti incasso per deviatore completo due uscite***Built-in parts for complete two ways diverter*

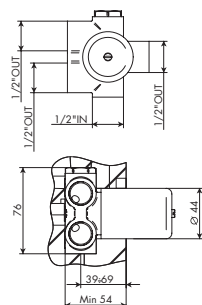
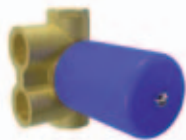
914016

**Art. 6503/3****Deviatore incasso completo tre uscite***Complete three ways built-in diverter*

01-6503/3- \* cromato

\* completare il codice dell'articolo con il codice della leva scelta, vedi inizio collezione.

\* please complete the article code by adding the code of the choosen lever, see beginning page of the collection.

**Art. 6503/3/E****Parti esterne per deviatore incasso completo tre uscite***External parts for complete three ways built-in diverter*

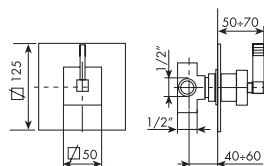
01-6503/3/E- \* cromato

\* completare il codice dell'articolo con il codice della leva scelta, vedi inizio collezione.

\* please complete the article code by adding the code of the choosen lever, see beginning page of the collection.

**Art. 034127****Parti incasso per deviatore completo tre uscite***Built-in parts for complete three ways diverter*

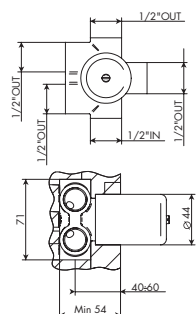
034127

**Art. 6503/4****Deviatore incasso completo quattro uscite***Complete four ways built-in diverter*

01-6503/4- \* cromato

\* completare il codice dell'articolo con il codice della leva scelta, vedi inizio collezione.

\* please complete the article code by adding the code of the choosen lever, see beginning page of the collection.

**Art. 6503/4/E****Parti esterne per deviatore incasso completo quattro uscite***External parts for complete four ways built-in diverter*

01-6503/4/E- \* cromato

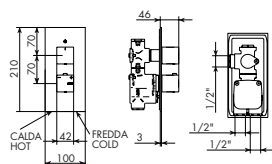
\* completare il codice dell'articolo con il codice della leva scelta, vedi inizio collezione.

\* please complete the article code by adding the code of the choosen lever, see beginning page of the collection.

**Art. 034128****Parti incasso per deviatore completo quattro uscite***Built-in parts for complete four ways diverter*

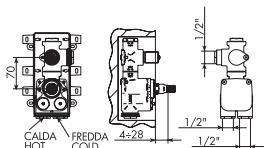
034128

Art. 0912/P



Miscelatore incasso termostatico 1 OUT bassa portata  
Built in thermostatic mixer 1 OUT less rate

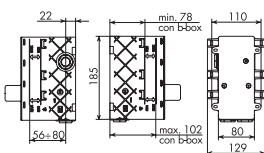
01-0912/P cromato



Art. 0912/H/P/E

Parti esterne per miscelatore incasso termostatico 1 OUT  
External parts for built in thermostatic mixer 1 OUT

01-0912/H/P/E cromato

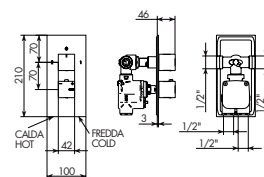


Art. 484020

Parti incasso per miscelatore incasso termostatico 1 OUT bassa portata  
Built in parts for thermostatic mixer 1 OUT less rate

484020

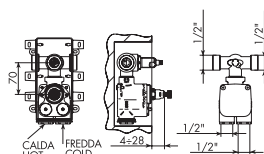
Art. 0912/2/P



Miscelatore incasso termostatico 2 OUT bassa portata

Built in thermostatic mixer 2 OUT less rate

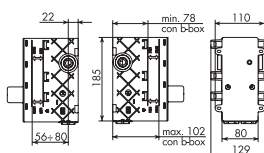
01-0912/2/P cromato



Art. 0912/2/P/E

Parti esterne per miscelatore incasso termostatico 2 OUT bassa portata  
External parts for built in thermostatic mixer 2 OUT less rate

01-0912/2/P/E cromato

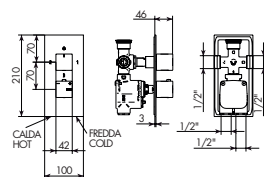


Art. 484021

Parti incasso per miscelatore incasso termostatico 2 OUT bassa portata  
Built in parts for thermostatic mixer 2 OUT less rate

484021

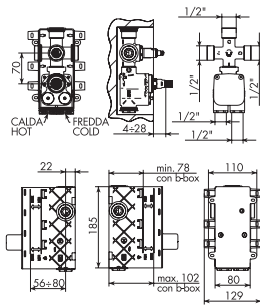
Art. 0912/3/P



Miscelatore incasso termostatico 3 OUT bassa portata

Built in thermostatic mixer 3 OUT less rate

01-0912/3/P cromato



**Art. 0912/3/P/E**

**Parti esterne per miscelatore incasso termostatico 3 OUT bassa portata**  
*External parts for built in thermostatic mixer 3 OUT less rate*

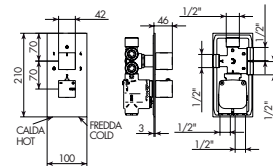
01-0912/3/P/E **cromato**

**Art. 484022**

**Parti incasso per miscelatore incasso termostatico 3 OUT bassa portata**  
*Built in parts for thermostatic mixer 3 OUT less rate*

484022

**Art. 0912/4/P**



**Miscelatore incasso termostatico 4 OUT bassa portata**

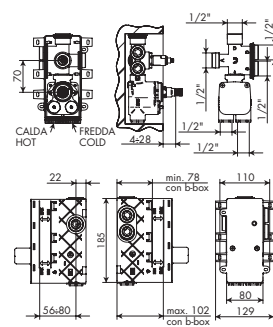
*Built in thermostatic mixer 4 OUT less rate*

01-0912/4/P **cromato**

**Art. 0912/4/P/E**

**Parti esterne per miscelatore incasso termostatico 4 OUT bassa portata**  
*External parts for built in thermostatic mixer 4 OUT less rate*

01-0912/4/P/E **cromato**

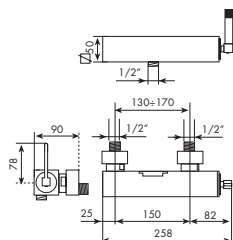


**Art. 484023**

**Parti incasso per miscelatore incasso termostatico 4 OUT bassa portata**  
*Built in parts for thermostatic mixer 4 OUT less rate*

484023

Art. 3009/1

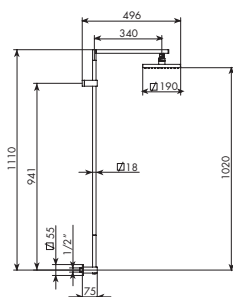
**Miscelatore esterno per doccia s/duplex completo***Exposed single lever mixer for shower without complete shower kit*

01-3009/1 \* cromato

\* completare il codice dell'articolo con il codice della leva scelta, vedi inizio collezione.

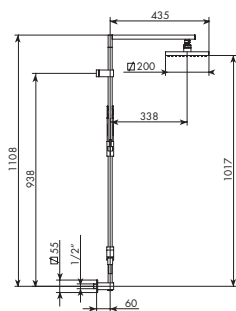
\* please complete the article code by adding the code of the choosen lever, see beginning page of the collection.

Art. 6513/4

**Curva presa d'acqua per doccia c/stelo e soffione***Water connector for high shower plate and pipe*

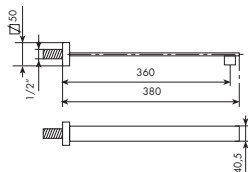
01-6513/4 cromato

Art. 6513/5/1

**Curva presa acqua per doccia c/stelo e soffione, c/deviatore e scorrevole***Water connector for high shower plate and pipe with sliding shower kit and shower head*

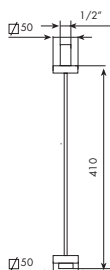
01-6513/5/1 cromato

Art. 6731

**Bocca erogazione per doccia a muro da 360 mm***Wall spout mm 360 for shower*

01-6731 cromato

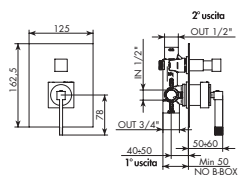
Art. 6731/1

**Bocca erogazione per doccia a soffitto da 400 mm***Ceiling shower arm mm 400*

01-6731/1 cromato



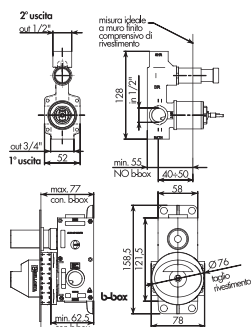
Art. 3000



**Miscelatore incasso c/ pulsante 2 OUT**  
*Built-in single lever mixer with diverter pulse 2 OUT*

01-3000- \* **cromato**

\* completare il codice dell'articolo con il codice della leva scelta, vedi inizio collezione.  
 \* please complete the article code by adding the code of the choosen lever, see beginning page of the collection.



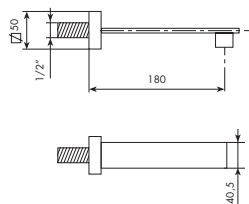
**Art. 3000/E**  
**Parti esterne per miscelatore incasso c/ pulsante 2 OUT**  
*External parts for built-in single lever mixer with diverter pulse 2 OUT*

01-3000/E- \* **cromato**

**Art. 304003**  
**Corpo incasso c/ pulsante 2 OUT attacchi ingresso acqua da 1/2"**  
*Built-in part with diverter pulse 2 OUT with 1/2" water connection*

01-304003 **cromato**

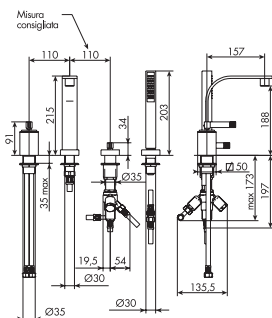
Art. 6703



**Bocca erogazione a muro per vasca**  
*Wall spout for bath*

01-6703 **cromato**

Art. 3701/2



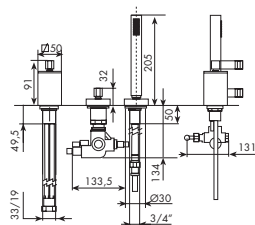
**Batteria per bordo vasca 4 fori**  
*4 holes bath mixer to be fitted on bath rim*

01-3701/2- \* **cromato**

\* completare il codice dell'articolo con il codice della leva scelta, vedi inizio collezione.  
 \* please complete the article code by adding the code of the choosen lever, see beginning page of the collection.

! PREDISPOSIZIONI per bordo vasca, art. 012/4, 012/6 e 012/7, vedi pag. 769  
 ! PRESYSTEM for exposed bath, art. 012/4, 012/6 and 012/7, see page 769

Art. 3001/20



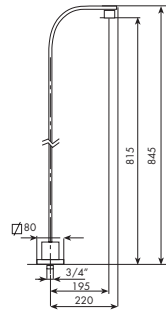
**Batteria per bordo vasca 3 fori s/bocca erogazione**  
*3 holes bath mixer without spout to be fitted on bath rim*

01-3001/20- \* **cromato**

\* completare il codice dell'articolo con il codice della leva scelta, vedi inizio collezione.  
 \* please complete the article code by adding the code of the choosen lever, see beginning page of the collection.

! PREDISPOSIZIONI per bordo vasca, art. 012/3, 012/6 e 012/7, vedi pag. 769  
 ! PRESYSTEM for exposed bath, art. 012/3, 012/6 and 012/7, see page 769

Art. 6701/26

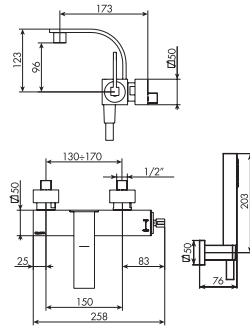


Bocca erogazione da pavimento per vasca

Floor spout for bath

01-6701/26 **\* cromato**

Art. 3701/A



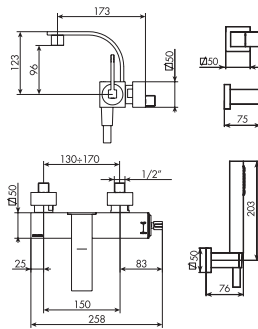
Miscelatore esterno per vasca c/gancio fisso completo

Exposed single lever mixer for bath with complete shower kit (fixed hook)

01-3701/A- **\* cromato**

\* completare il codice dell'articolo con il codice della leva scelta, vedi inizio collezione.  
\* please complete the article code by adding the code of the choosen lever, see beginning page of the collection.

Art. 3701/B



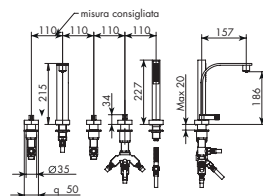
Miscelatore esterno per vasca c/gancio fisso completo e duplex

Exposed single lever mixer for bath with complete shower kit (fixed hook) and movable hook

01-3701/B- **\* cromato**

\* completare il codice dell'articolo con il codice della leva scelta, vedi inizio collezione.  
\* please complete the article code by adding the code of the choosen lever, see beginning page of the collection.

Art. 6801/2 tradizionale



Batteria per bordo vasca 5 fori

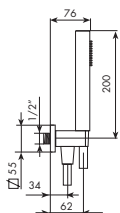
5 holes bath mixer to be fitted on bath rim

01-6801/2- **\* cromato**

\* completare il codice dell'articolo con il codice della leva scelta, vedi inizio collezione.  
\* please complete the article code by adding the code of the choosen lever, see beginning page of the collection.

! PREDISPOSIZIONI per bordo vasca, art. 012/5, 012/6 e 012/7, vedi pag. 769  
! PRESYSTEM for exposed bath, art. 012/5, 012/6 and 012/7, see page 769

Art. 6503/1/A

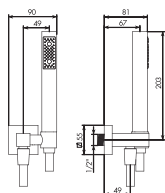


**Gancio incasso fisso completo**

*Complete shower kit (fixed hook)*

01-6503/1/A **cromato**

Art. 6503/1

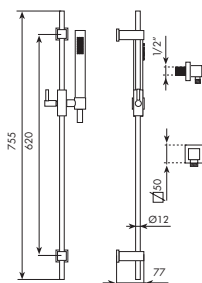


**Duplex incasso completo**

*Complete shower kit (movable hook)*

01-6503/1 **cromato**

Art. 6530

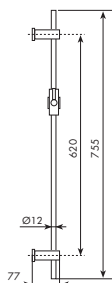


**Saliscendi completo c/presa d'acqua**

*Complete wall pipe with water connection*

01-6530 **cromato**

Art. 6530/1

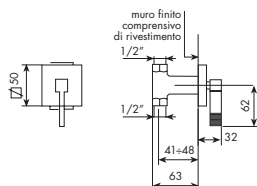


**Saliscendi**

*Wall pipe*

01-6530/1 **cromato**

Art. 6608/S - 6608/D



**Rubinetto incasso da 1/2" sinistro**

*Left built-in stop cock 1/2"*

01-6608/S- **\* cromato**

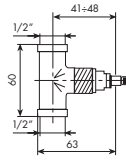
**Rubinetto incasso da 1/2" destro**

*Right built-in stop cock 1/2"*

01-6608/D- **\* cromato**

\* completare il codice dell'articolo con il codice della leva scelta, vedi inizio collezione.

\* please complete the article code by adding the code of the choosen lever, see beginning page of the collection.



**Art. 6608/S/E**

**Parti esterne per rubinetto incasso sinistro**  
External parts for left built-in stop cock

01-6608/S/E- \* cromato

\* completare il codice dell'articolo con il codice della leva scelta, vedi inizio collezione.  
\* please complete the article code by adding the code of the choosen lever, see beginning page of the collection.

**Art. 6608/D/E**

**Parti esterne per rubinetto incasso destro**  
External parts for right built-in stop cock

01-6608/D/E- \* cromato

**Art. 654033**

**Corpo incasso 1/2" vitone forato sinistro**  
Left built-in part with 1/2" valve and threaded fixation hole

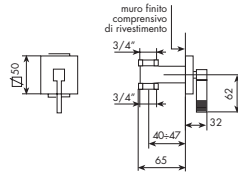
654033

**Art. 654032**

**Corpo incasso 1/2" vitone forato destro**  
Right built-in part with 1/2" valve and threaded fixation hole

654032

**Art. 6608/1/S - 6608/1/D**



**Rubinetto incasso da 3/4" sinistro**

Left built-in stop cock 3/4"

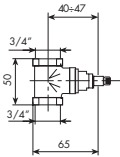
01-6608/1/S- \* cromato

**Rubinetto incasso da 3/4" destro**

Right built-in stop cock 3/4"

01-6608/1/D- \* cromato

\* completare il codice dell'articolo con il codice della leva scelta, vedi inizio collezione.  
\* please complete the article code by adding the code of the choosen lever, see beginning page of the collection.



**Art. 6608/S/E**

**Parti esterne per rubinetto incasso sinistro**  
External parts for left built-in stop cock

01-6608/S/E- \* cromato

**Art. 6608/D/E**

**Parti esterne per rubinetto incasso destro**  
External parts for right built-in stop cock

01-6608/D/E- \* cromato

\* completare il codice dell'articolo con il codice della leva scelta, vedi inizio collezione.  
\* please complete the article code by adding the code of the choosen lever, see beginning page of the collection.

**Art. 654035**

**Corpo incasso 3/4" vitone forato sinistro**  
Left built-in part with 1/2" valve and threaded fixation hole

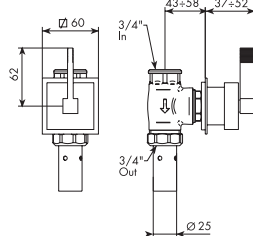
654035

**Art. 654034**

**Corpo incasso 3/4" vitone forato destro**  
Right built-in part with 1/2" valve and threaded fixation hole

654034

**Art. 6540**

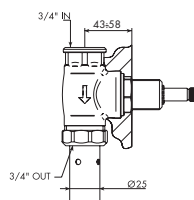


**Passo rapido da 3/4"**

Built-in rapid flow cock 3/4"

01-6540- \* cromato

\* completare il codice dell'articolo con il codice della leva scelta, vedi inizio collezione.  
\* please complete the article code by adding the code of the choosen lever, see beginning page of the collection.



**Art. 6540/E**

**Parti esterne per passo rapido**

External parts for built-in rapid flow cock

01-6540/E- \* cromato

\* completare il codice dell'articolo con il codice della leva scelta, vedi inizio collezione.  
\* please complete the article code by adding the code of the choosen lever, see beginning page of the collection.

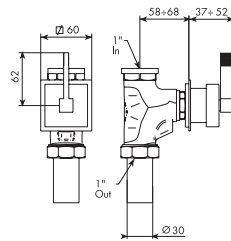
**Art. 654099**

**Parti incasso per passo rapido da 3/4"**

Built-in parts for rapid flow cock 3/4"

654099

Art. 6540/1



**Passo rapido da 1"**  
Built-in rapid flow cock 1"

01-6540/1- \* cromato

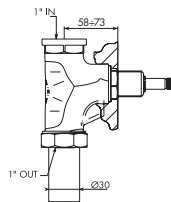
\* completare il codice dell'articolo con il codice della leva scelta, vedi inizio collezione.  
\* please complete the article code by adding the code of the choosen lever, see beginning page of the collection.

**Art. 6540/E**

**Parti esterne per passo rapido**  
External parts for built-in rapid flow cock

01-6540/E- \* cromato

\* completare il codice dell'articolo con il codice della leva scelta, vedi inizio collezione.  
\* please complete the article code by adding the code of the choosen lever, see beginning page of the collection.

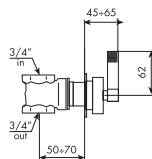


**Art. 654100**

**Parti incasso per passo rapido da 1"**  
Built-in parts for rapid flow cock 1"

654100

Art. 6532/2



**Saracinesca da 3/4"**  
Gate valve 3/4"

01-6532/2- cromato

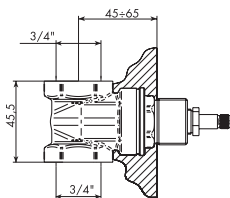
\* completare il codice dell'articolo con il codice della leva scelta, vedi inizio collezione.  
\* please complete the article code by adding the code of the choosen lever, see beginning page of the collection.

**Art. 6532/2/E**

**Parti esterne per saracinesca da 3/4" completa**  
External parts for complete gate valve 3/4"

01-6532/2/E- \* cromato

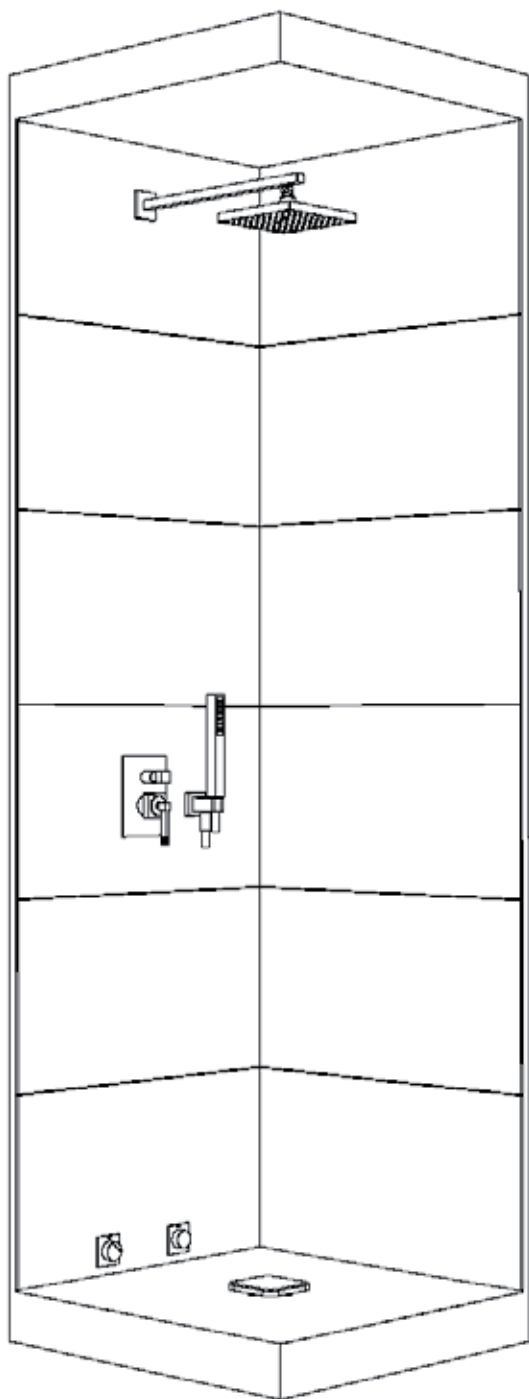
\* completare il codice dell'articolo con il codice della leva scelta, vedi inizio collezione.  
\* please complete the article code by adding the code of the choosen lever, see beginning page of the collection.



**Art. 035212**

**Parti incasso per saracinesca da 3/4" completa**  
Built-in parts for complete gate valve 3/4"

035212



Per dettagli tecnici, vedi pag. 182  
 For technical details, see page 182

ARTICOLO	QUANTITA'
01-3000	1
01-6503/1/A	1
01-655060	1
01-655066	1
01-7716	1
01-0920/2	2
<b>TOTALE</b>	

MANIGLIE	DESCRIZIONE	PER ART.	PAG. 886/901
Art. 304005	<b>Leva VO c/mozzo</b> <i>VO lever with nut</i>	3000, 3701/A, 3701/B, 3701/2, 3701/20, 3705, 3705/1, 3705/1/A, 3705/3, 3705/3/1, 3705/3/A, 3705/3/B, 3707, 3709/1, 3021	
Art. 304006	<b>Leva VO c/mozzo c/inserto wengé</b> <i>VO lever with nut and wengé insert</i>	3000, 3701/A, 3701/B, 3701/2, 3701/20, 3705, 3705/1, 3705/1/A, 3705/3, 3705/3/1, 3705/3/A, 3705/3/B, 3707, 3709/1, 3021	
Art. 656022	<b>Leva F</b> <i>F Lever</i>	3701/2, 3701/20, 6801/2, 6805, 6805/3, 6805/3/1, 6807, 6608/D, 6608/S, 6608/1/D, 6608/1/S, 6503/2, 6503/3, 6503/4, 6532/2, 6540, 6540/1	
Art. 774037	<b>Maniglia x term incasso completa x cartuccia Ø34.4</b> <i>Complete handle for cartridge Ø34.4 for built-in therm mixer</i>	0912/P, 0912/2/P, 0912/3/P, 0912/4/P	
Art. 774043	<b>Maniglia x rubinetto incasso alta portata completa</b> <i>Complete handle for built-in tap high flow rate</i>	0912/P, 0912/2/P, 0912/3/P, 0912/4/P	
<b>DOCETTE</b>			<b>PAG. 902</b>
Art. 655018	<b>Doccetta quadra</b> <i>Square shower handset</i>		
<b>FLESSIBILI</b>			<b>PAG. 903</b>
Art. 655016	<b>Flessibile 1/2" F x 1/2" F conico lunghezza 150 cm</b> <i>Hose 1/2" f x 1/2" f conical length cm 150</i>		
Art. 655027	<b>Flessibile 1/2" F x 1/2" F conico lunghezza 200 cm</b> <i>Hose 1/2" f x 1/2" f conical length cm 200</i>		
Art. 915003	<b>Flessibile 1/2" F conico x 1/2" F conico L 150 cm</b> <i>Hose 1/2" f x 1/2" f conical length cm 150</i>		
Art. 915020	<b>Flessibile 1/2" F conico x 1/2" F conico L 200 cm</b> <i>Hose 1/2" f x 1/2" f conical length cm 200</i>		
<b>GANCI INCASSO E PRESE D'ACQUA</b>			<b>PAG. 904/905</b>
Art. 654043	<b>Gancio incasso fisso quadro</b> <i>Square built-in fixed hook</i>	6503/1/A	
Art. 655006	<b>Presa d'acqua quadra</b> <i>Square water connection</i>	6530	
Art. 655012	<b>Gancio incasso duplex quadro</b> <i>Square built-in movable hook</i>	6503/1	
<b>GANCI ESTERNI</b>			<b>PAG. 906/907</b>
Art. 654044	<b>Gancio esterno fisso quadro</b> <i>External square fixed hook</i>	3701/A, 3701/B	
Art. 655005	<b>Gancio esterno duplex quadro</b> <i>External square movable hook</i>	3701/B	
<b>DEVIATORI</b>			<b>PAG. 908/910</b>
Art. 035344	<b>Cartuccia dev bassa portata 4 OUT trasp completa</b> <i>4 OUT diverter no colour small flow rate cartridge</i>	6503/4, 0912/4/P	
Art. 035345	<b>Cartuccia dev bassa portata gialla 3 OUT completa</b> <i>3 OUT diverter yellow small flow rate cartridge</i>	6503/3, 0912/3/P	
Art. 035346	<b>Cartuccia dev rossa 2 uscite completa di fondello</b> <i>Diverter red cartridge at 2 ways with crotch</i>	6503/2, 0912/2/P	
Art. 105029	<b>Valvola dev. mix incasso vasca</b> <i>Diverter valve for built-in bath mixer</i>	3000	
Art. 654020	<b>Valvola deviatrice completa</b> <i>Complete diverter valve</i>	3701/A, 3701/B	
Art. 655070	<b>Valvola deviatore stelo quadro CAL completa</b> <i>Complete square CAL diverter valve</i>	6513/5/1	
<b>PROLUNGHE</b>			<b>PAG. 911/912</b>
Art. 104006	<b>Kit prolunga 2 cm (bicc + dev + cil.dev + spes)</b> <i>Extension kit cm 2 (seat + diverter + diverter roll + thickness)</i>	3000	

PROLUNGHE	DESCRIZIONE	PER ART.	PAG. 911/912
Art. 104007	<b>Kit prolunga 3 cm (bicc + dev + cil.dev + spes)</b> <i>Extension kit cm 3 (seat + diverter + diverter roll + thickness)</i>	3000	
Art. 104008	<b>Kit prolunga 4 cm (bicc + dev + cil.dev + spes)</b> <i>Extension kit cm 4 (seat + diverter + diverter roll + thickness)</i>	3000	
Art. 104009	<b>Kit prolunga 2 cm (bicchiere + spessore)</b> <i>Extension kit cm 2 (seat + thickness)</i>	3705/3, 3705/3/1, 3705/3/A, 3705/3/B, 3021	
Art. 104010	<b>Kit prolunga 3 cm (bicchiere + spessore)</b> <i>Extension kit cm 3 (seat + thickness)</i>	3705/3, 3705/3/1, 3705/3/A, 3705/3/B, 3021	
Art. 104011	<b>Kit prolunga 4 cm (bicchiere + spessore)</b> <i>Extension kit cm 4 (seat + thickness)</i>	3705/3, 3705/3/1, 3705/3/A, 3705/3/B, 3021	
Art. 484042	<b>Asta brocciata Ø8z24 per deviatori con vite</b> <i>Broaching rod Ø8z24 for diverter with screw</i>	0912/2/P, 0912/3/P, 0912/4/P	
Art. 774054	<b>Asta brocciata Ø8z20 c/vite</b> <i>Broaching rod Ø8z20 with screw</i>	0912/P, 0912/2/P, 0912/3/P, 0912/4/P	
Art. 774055	<b>Asta brocciata Ø8z24 c/vite</b> <i>Broaching rod Ø8z24 with screw</i>	0912/P	

PIASTRE E FERMAPIASTRE			PAG. 913/917
Art. 654007	<b>Piastra 125 x 162,5 incasso c/anelli + guarn</b> <i>Wall plate 125 x 162.5 with rings and gaskets</i>	3000	
Art. 654008	<b>Piastra 60 x 60 1 foro c/anello + guarn</b> <i>Single hole 60 x 60 wall plate with ring and gasket</i>	3705/3/A, 3705/3/B, 6532/2, 6540, 6540/1	
Art. 654009	<b>Piastra 125 x 125 1 foro c/anello + guarn</b> <i>Single hole 125 x 125 wall plate with ring and gasket</i>	3021	
Art. 654010	<b>Piastra 2 fori 125 x 240 c/anelli + guarnizioni</b> <i>Two-holes 125 x 240 wall plate with rings and gaskets</i>	3705/3, 3705/3/1	
Art. 484027	<b>Ferma piastra deviatori completa</b> <i>Stop diverter complete plate</i>	0912/2/P, 0912/3/P, 0912/4/P	
Art. 484032	<b>Piastra 100x210 completa per term incasso 2 OUT</b> <i>Complete plate 100x210 2 OUT built-in thermostatic</i>	0912/2/P	
Art. 484033	<b>Piastra 100x210 completa per term incasso 3 OUT</b> <i>Complete plate 100x210 3 OUT built-in thermostatic</i>	0912/3/P	
Art. 484037	<b>Piastra 100x210 completa per term incasso 4 OUT</b> <i>Complete plate 100x210 4 OUT built-in thermostatic</i>	0912/4/P	
Art. 774041	<b>Piastra 100x210 completa per termostatico incasso 1 OUT</b> <i>Complete plate 100x210 1 OUT built-in thermostatic</i>	0912/P	
Art. 774044	<b>Ferma piastra rubinetti completa</b> <i>Stop tap complete plate</i>	0912/P	

BOCCHE			PAG. 924/928
Art. 654030	<b>Bocca a muro completa 170 mm</b> <i>Complete wall spout mm 170</i>	3705/3/A	
Art. 654031	<b>Bocca a muro completa 225 mm</b> <i>Complete wall spout mm 225</i>	3705/3/B	

COPRI CARTUCCE			PAG. 929/932
Art. 304001	<b>Piattino scorrevole completo</b> <i>Complete sliding disc</i>	3000, 3701/A, 3701/B, 3701/2, 3701/20, 3705, 3705/1, 3705/1/A, 3705/3, 3705/3/1, 3705/3/A, 3705/3/B, 3707, 3009/1, 3021	
Art. 304007	<b>Rosone incasso c/grani e anello</b> <i>Built-in rosette with blocking screw and ring</i>	3000, 3705/3, 3705/3/1, 3705/3/A, 3705/3/B, 3021	
Art. 654023	<b>Rosone quadro dx a parete serigrafato</b> <i>Square shaped right wall rosette with serigraphy</i>	6805/3, 6805/3/1, 6808/D, 6608/1/D	
Art. 654024	<b>Rosone quadro sx a parete serigrafato</b> <i>Square shaped left wall rosette with serigraphy</i>	6805/3, 6805/3/1, 6608/S, 6608/1/S	



COPRI CARTUCCE	DESCRIZIONE	PER ART.	PAG. 929/932
Art. 654025	<b>Rosone quadro dx d'appoggio serigrafato</b> <i>Square shaped right standing rosette with serigraphy</i>	6801/2, 6805, 6807	
Art. 654026	<b>Rosone quadro sx d'appoggio serigrafato</b> <i>Square shaped left standing rosette with serigraphy</i>	6801/2, 6805, 6807	

CARTUCCE   CARTUCCE TERMOSTATICHE			PAG. 933/935
Art. 305001	<b>Cartuccia K35 c/asta VO</b> <i>K35 cartridge with vo rod</i>	3000, 3701/A, 3701/B, 3701/2, 3701/20, 3705/3, 3705/3/1, 3705/3/A, 3705/3/B, 3009/1, 3021	
Art. 304010	<b>Cartuccia Ø25 c/asta VO</b> <i>cartridge Ø25 with vo rod</i>	3705, 3705/1, 3705/1/A, 3707	
Art. 774045	<b>Gruppo valvola non ritorno c/filtro completo</b> <i>No return group valve with filter complete</i>	0912/P, 0912/2/P, 0912/3/P, 0912/4/P	
Art. 775007	<b>Cartuccia per mix incasso termostatico Ø34.4</b> <i>Built-in thermostatic cartridge Ø34.4</i>	0912/P, 0912/2/P, 0912/3/P, 0912/4/P	
Art. 776082	<b>Fermo sicurezza x maniglia termostatico</b> <i>Safe stop for lever thermostatic</i>	0912/P, 0912/2/P, 0912/3/P, 0912/4/P	

VITONI			PAG. 936/937
Art. 054023	<b>Piantana attacco 1/2" completa vitone corto sinistro</b> <i>Complete side internal part 1/2" connection with left ceramic valve</i>	6801/2, 6805, 6807	
Art. 054024	<b>Piantana attacco 1/2" completa vitone corto destro</b> <i>Complete side internal part 1/2" connection with right ceramic valve</i>	6801/2, 6805, 6807	
Art. 055001	<b>Vitone corto forato destro a dischi ceramici</b> <i>Right short ceramic threaded disc</i>	6801/2, 6805, 6805/3, 6805/3/1, 6807, 6608/D, 6608/1/D	
Art. 055002	<b>Vitone corto forato sinistro a dischi ceramici</b> <i>Left short ceramic threaded disc</i>	6801/2, 6805, 6805/3, 6805/3/1, 6807, 6608/S, 6608/1/S	
Art. 055134	<b>Vitone corto forato destro 3/4" a dischi ceramici</b> <i>Right ceramic 3/4" valve with threaded fixation hole by ceramic disc</i>	0912/P	
Art. 654067	<b>Vitone per passo rapido FO</b> <i>Valve for FO built-in rapid flow cock</i>	6540, 6540/1	