

BELLOSTA

LISTINO MODERNO | 80.2013

CURA, ATTENZIONE, TECNICHE D'AVANGUARDIA, GUSTO, STILE ED ESPERIENZA, SONO GLI INGREDIENTI DELLE COLLEZIONI D'AUTORE BELLOSTA RUBINETTERIE

GRAZIE PER LA FIDUCIA

PRODOTTO INTERAMENTE IN ITALIA



CARE, ATTENTION, AVANTGARDE TECHNIQUE, TASTE, STYLE AND EXPERIENCE ARE THE INGREDIENTS OF THE BELLOSTA RUBINETTERIE COLLECTIONS

THANKS FOR THE TRUST

COMPLETELY MADE IN ITALY





HYDROSCOPINI TONDO

EQB DESIGN

COORDINATI
HYDROSCOPINI

FINITURE DI SERIE - COLLEZIONE HYDROSCOPINI TONDO

Tutti gli hydroscopini possono essere abbinati a tutte le collezioni rubinetteria. Per le finiture vedi collezione di riferimento.

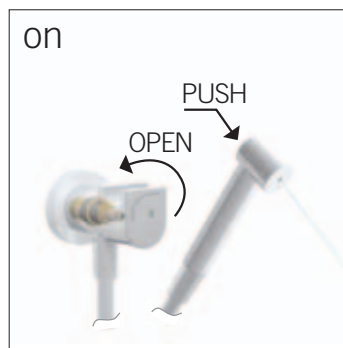
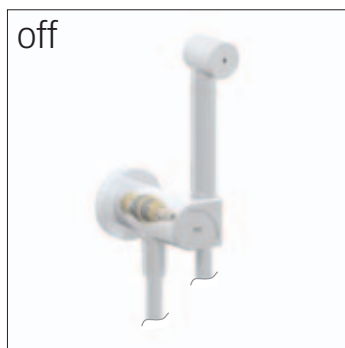
All hydrobrushes could be linked at all tap's collections. For the finishing, see reference collection.

CONSIGLIO TECNICO:

TECHNICAL ADVICE:

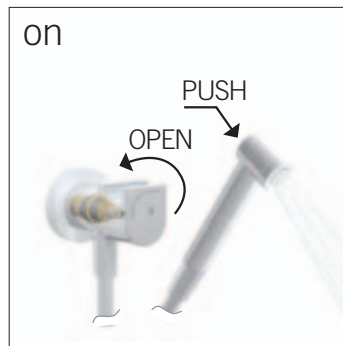
POSIZIONARE L'IDROSCOPINO AD UNA ALTEZZA DI 500-700 MM DA PAVIMENTO

IT WILL BE BETTER TO PUT THE HYDROBRUSH AT 500-700 MM FROM THE FLOOR



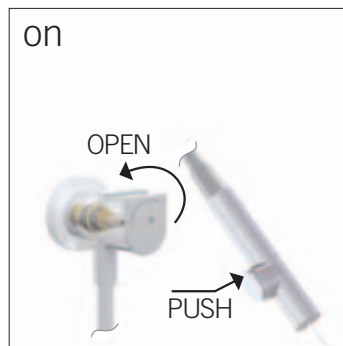
HYDROSCOPINO CON EROGAZIONE UNICA TIPO LASER
HYDROBRUSH WITH ONLY SPRAYER LIKE LASER

- > ART. 0403/ID/1
- > ART. 0903/ID/1



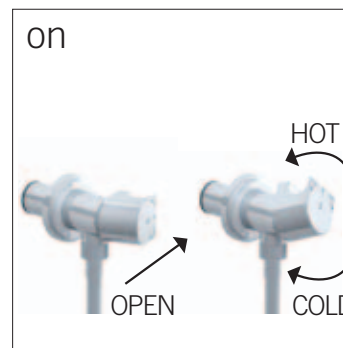
HYDROSCOPINO CON EROGAZIONE UNICA TIPO DOCCETTA
HYDROBRUSH WITH ONLY SPRAYER LIKE HANDSHOWER

- > ART. 0403/ID
- > ART. 0903/ID



HYDROSCOPINO CON EROGAZIONE UNICA SUPERIORE TIPO LASER
HYDROBRUSH WITH ONLY SPRAYER UP LIKE LASER

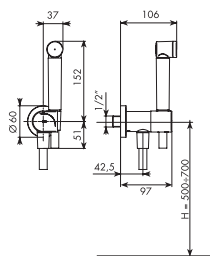
- > ART. 0403/ID/LA



GANCIO DOCCETTA BIDET COMPLETO CON MISCELATORE INTEGRATO
COMPLETE HOOK HAND SHOWER BIDET WITH INTEGRATE MIXER

- > ART. 0403/MI

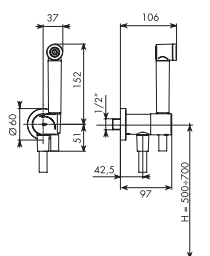
Art. 0403/ID/1



Idroscopino tondo completo c/attivatore ed EROGAZIONE TIPO LASER, rosone TONDO
 Complete round hydrobrush with activator and SPRAYER LIKE LASER, ROUND rose window

01-0403/ID/1 cromato	66-0403/ID/1 bianco opaco
33-0403/ID/1 cromo satinato	67-0403/ID/1 nero opaco
34-0403/ID/1 cromo spazzolato	69-0403/ID/1 argento opaco
35-0403/ID/1 nickel spazzolato	71-0403/ID/1 oro opaco

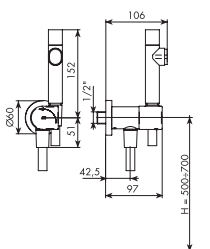
Art. 0403/ID



Idroscopino tondo completo c/attivatore ed EROGAZIONE TIPO DOCCETTA, rosone TONDO
 Complete round hydrobrush with activator and SPRAYER LIKE HANDSHOWER, ROUND rose window

01-0403/ID cromato	66-0403/ID bianco opaco
33-0403/ID cromo satinato	67-0403/ID nero opaco
34-0403/ID cromo spazzolato	69-0403/ID argento opaco
35-0403/ID nickel spazzolato	71-0403/ID oro opaco

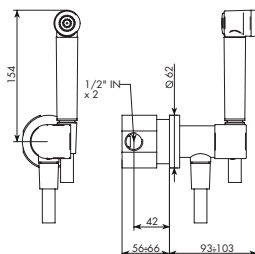
Art. 0403/ID/LA



Idroscopino tondo completo c/attivatore ed EROG. SUPERIORE TIPO LASER, rosone TONDO
 Complete round hydrobrush with activator and SPRAYER UP LIKE LASER, ROUND rose window

01-0403/ID/LA cromato	
------------------------------	--

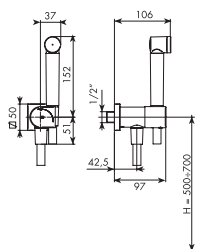
Art. 0403/MI



Gancio doccia bidet completo con miscelatore integrato
 Complete hook hand shower bidet with integrate mixer

01-0403/MI cromato	66-0403/MI bianco opaco
33-0403/MI cromo satinato	67-0403/MI nero opaco
34-0403/MI cromo spazzolato	69-0403/MI argento opaco
35-0403/MI nickel spazzolato	71-0403/MI oro opaco

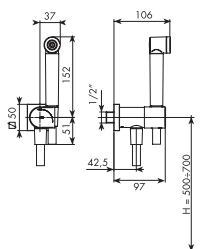
Art. 0903/ID/1



Idroscopino tondo completo c/attivatore ed EROGAZIONE TIPO LASER, rosone QUADRO
Complete round hydrobrush with activator and SPRAYER LIKE LASER, SQUARE rose window

01-0903/ID/1 cromato	66-0903/ID/1 bianco opaco
33-0903/ID/1 cromo satinato	67-0903/ID/1 nero opaco
34-0903/ID/1 cromo spazzolato	69-0903/ID/1 argento opaco
35-0903/ID/1 nickel spazzolato	71-0903/ID/1 oro opaco

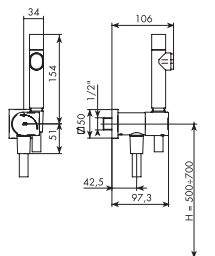
Art. 0903/ID



Idroscopino tondo completo c/attivatore ed EROGAZIONE TIPO DOCCHETTA, rosone QUADRO
Complete round hydrobrush with activator and SPRAYER LIKE HANDSHOWER, SQUARE rose window

01-0903/ID cromato	66-0903/ID bianco opaco
33-0903/ID cromo satinato	67-0903/ID nero opaco
34-0903/ID cromo spazzolato	69-0903/ID argento opaco
35-0903/ID nickel spazzolato	71-0903/ID oro opaco

Art. 0903/ID/LA



Idroscopino tondo completo c/attivatore ed EROG. SUPERIORE TIPO LASER, rosone QUADRO
Complete round hydrobrush with activator and SPRAYER UP LIKE LASER, SQUARE rose window

01-0903/ID/LA cromato

Art. 044035 **Maniglia Idroscopino tondo completa**
Round hydrobrush complete lever



01-044035	cromato
33-044035	cromo satinato
34-044035	cromo spazzolato
35-044035	nickel spazzolato
66-044035	bianco opaco

67-044035	nero opaco
69-044035	argento opaco
71-044035	oro opaco
75-044035	dorato spazzolato

Art. 034114 **Doccetta Idroscopino tondo completa**
EROGAZIONE TIPO DOCCETTA
Round hydrobrush complete handshower SPRAYER
LIKE HANDSHOWER



ARTICOLO DI RIFERIMENTO *REFERENCE ARTICLE*:

0403/ID, 0903/ID

01-034114	cromato
33-034114	cromo satinato
34-034114	cromo spazzolato
35-034114	nickel spazzolato
66-034114	bianco opaco

67-034114	nero opaco
69-034114	argento opaco
71-034114	oro opaco
75-034114	dorato spazzolato

Art. 034116 **Doccetta Idroscopino tondo completa**
EROGAZIONE TIPO LASER
Round hydrobrush complete handshower SPRAYER
LIKE LASER



ARTICOLO DI RIFERIMENTO *REFERENCE ARTICLE*:

0403/ID/1, 0903/ID/1

01-034116	cromato
33-034116	cromo satinato
34-034116	cromo spazzolato
35-034116	nickel spazzolato
66-034116	bianco opaco

67-034116	nero opaco
69-034116	argento opaco
71-034116	oro opaco
75-034116	dorato spazzolato

Art. 044038 **Doccetta Idroscopino laser completa**
EROGAZIONE SUPERIORE TIPO LASER
Laser hydrobrush complete handshower SPRAYER UP
LIKE LASER



ARTICOLO DI RIFERIMENTO *REFERENCE ARTICLE*:

0403/ID/LA, 0903/ID/LA

01-044038	cromato
-----------	---------

Art. 014084 **Gancio esterno fisso**
External fixed hook



01-014084	cromato
33-014084	cromo satinato
34-014084	cromo spazzolato
35-014084	nickel spazzolato
66-014084	bianco opaco

67-014084	nero opaco
69-014084	argento opaco
71-014084	oro opaco
75-014084	dorato spazzolato

Art. 755036 **Flessibile satinato 1/2" F conico x 1/2" F conico**
lunghezza cm 90
Satin conic hose 1/2" F x 1/2" with lenght 90 cm



01-755036	cromato
33-755036	cromo satinato

67-755036	nero opaco
69-755036	argento opaco
71-755036	oro opaco
75-755036	dorato spazzolato

Art. 990330 **Flessibile 1/2" F calotta zigrinata x 1/2" F conico**
lunghezza cm 95
Hose with knurled 1/2" F x conic hose 1/2" with length cm 95



34-990330	cromo spazzolato
35-990330	nickel spazzolato
66-990330	bianco opaco
67-990330	nero opaco

69-990330	argento opaco
71-990330	oro opaco
75-990330	dorato spazzolato

Art. **755057**



**Vitone corto forato destro frizionato a dischi
ceramici**
*Small right clutched pierced ceramic valve at ceramic
disc*

755057

Art. **096009**



Copricartuccia per Ø25 TH
Retaining ring for cartridge Ø25

ARTICOLO DI RIFERIMENTO *REFERENCE ARTICLE:*
0403/MI

01-096009	cromato
33-096009	cromo satinato
34-096009	cromo spazzolato
35-096009	nickel spazzolato

66-096009	bianco opaco
67-096009	nero opaco
69-096009	argento opaco
71-096009	oro opaco

Art. **034135**



Maniglia Idroscopino Mix tondo completa
Round hydrobrush complete lever

ARTICOLO DI RIFERIMENTO *REFERENCE ARTICLE:*
0403/MI

01-034135	cromato
33-034135	cromo satinato
34-034135	cromo spazzolato
35-034135	nickel spazzolato

66-034135	bianco opaco
67-034135	nero opaco
69-034135	argento opaco
71-034135	oro opaco

